



"The Community's Blueprint For The Future"



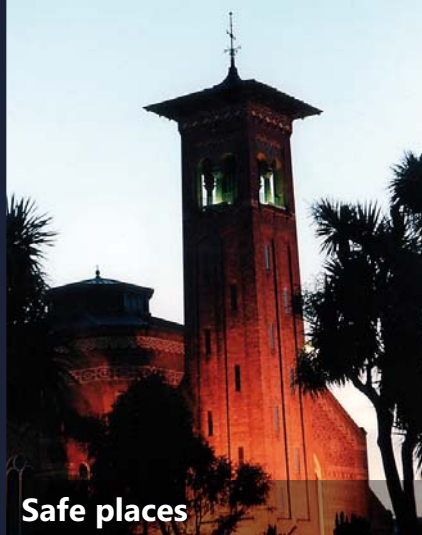
Southland's Community Outcomes:

**Monitoring Report for the
period 2005 - 2008**

June 2009



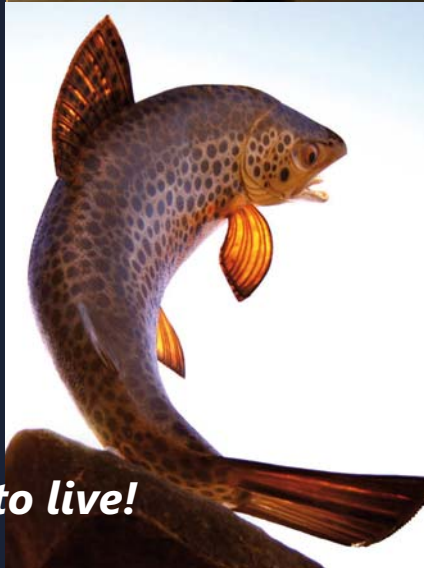
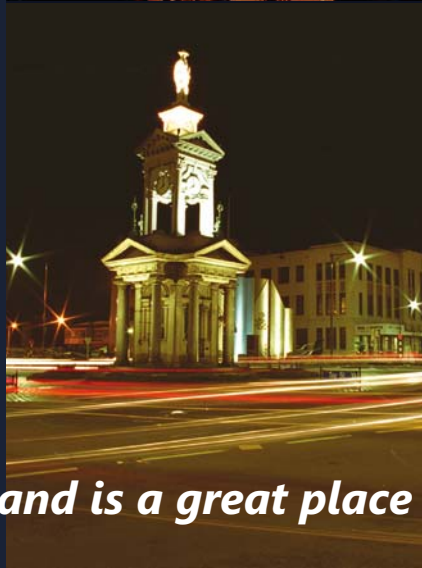
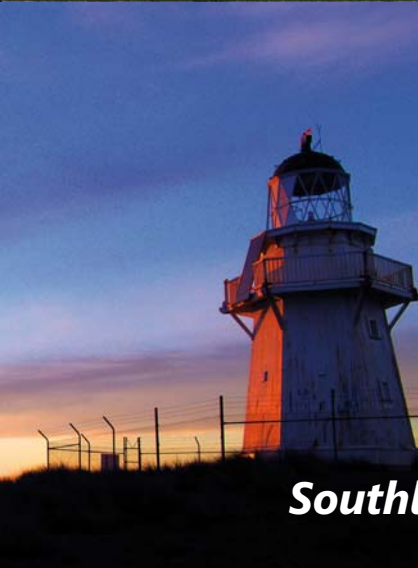
Economy



Safe places



Healthy people



Southland is a great place to live!



Leadership



Environment



Education

Southland's Community Outcomes

Outcome One

"Southland is a great place to live"

- 1.1 We value our history and heritage
- 1.2 We have a choice of quality places to go and things to do
- 1.3 We embrace and respect a diverse community
- 1.4 We are proud to be Southlanders
- 1.5 We live in a creative place

Outcome Two

"A diverse economy built from our strengths for growth and prosperity"

- 2.1 We have a quality infrastructure with potential for growth
- 2.2 We have an innovative and vibrant culture that supports business
- 2.3 We have a business friendly environment in which to operate
- 2.4 We have an economy built on our competitive advantage
- 2.5 We have full employment and rewarding careers
- 2.6 We retain and build on our skills base
- 2.7 We keep the things about living here that we value

Outcome Three

"Safe places in a caring society that is free from crime"

- 3.1 We have safe roads
- 3.2 We have safe homes
- 3.3 We have public places safe for children and families
- 3.4 We apprehend and hold law breakers appropriately accountable
- 3.5 We support the victims of crime

Outcome Four

"We are healthy people"

- 4.1 We are able to live healthy lifestyles
- 4.2 We have good quality affordable housing
- 4.3 We live in a compassionate caring community
- 4.4 We have equity of access to health services

Outcome Five

"Strong, effective leadership taking us into the future"

- 5.1 Citizens and communities are inspired, motivated and empowered
- 5.2 Decisions are progressive, forward looking and robust
- 5.3 The community has confidence in its leaders

Outcome Six

"A treasured environment which we care for and which supports us now and into the future"

- 6.1 We have an informed community caring for the environment
- 6.2 We have a healthy, safe and accessible built environment
- 6.3 We have an environment protected from the negative effects of human activities

Outcome Seven

"A well-educated and skilled community continually seeking further opportunities to learn"

- 7.1 We have accessible learning opportunities
- 7.2 We have high quality leaning opportunities available to meet community needs and demands
- 7.3 We deliver innovative, integrated and effective learning programmes
- 7.4 We have a culture of continuous learning

Preface

Council Leaders – The Collaborative Way Forward

Our Way Southland is a joint project between Southland's four local authorities, to facilitate the realisation of the collective vision which Southlanders have for their region. This project reports to the Shared Services Forum, a collaborative arm of the four councils.

The Our Way Southland Community Outcomes Report of August 2005 identified seven principal community outcomes for the region. The seven major outcomes, and associated intermediate outcomes, have now been incorporated into the Long Term Council Community Plans and Annual Plans as guiding principles to ensure that Southland's councils take the community's aspirations into account when setting programmes and activities.

Steps towards achieving the community's intermediate and long-term outcomes are monitored on an ongoing basis by the Our Way Southland project. This is the first outcomes monitoring report, which provides indicators and benchmarks against which the progress made towards the achievement of Southland's community's outcomes in the period 2005-2008 can now be gauged.

The realisation of the community's aspirations is best achieved by the combined resources of stakeholder agencies and service providers within the region, including central and local government and the private and volunteer sectors. The intent of this report is to assist in the identification of the key areas of concern and action for Southland.

The Our Way Southland project builds upon the long history of collaboration in Southland between councils, central government agencies, Maori, and the volunteer and business sectors for the benefit of everyone. The identification of Southlanders' long-term goals and aspirations, particularly principal areas of concern and action, requires an efficient, effective and coordinated whole of region approach so as to provide viable regional solutions to the regional challenges of greatest importance to the community. The combined approach of local authorities and other organisations to the realisation of the outcomes most desired by the people of Southland will ensure that, as a region, we will continue to collaborate and achieve things 'Our Way'.



Chairman Stuart Collie JP
Environment Southland



Mayor Tim Shadbolt JP
Invercargill City Council



Mayor Frana Cardno QSO JP
Southland District Council



Mayor Tracy Hicks JP
Gore District Council

Executive Summary

This report provides a snapshot of the Southland Region and utilises a set of indicators to assess the progress made within the region towards the achievement of the community outcomes for Southland. This information can now assist with decisions regarding future regional policies and funding allocations in order that the delivery of resources and activities can be better coordinated and prioritised so as to best achieve the desired outcomes.

A key feature of the Southland regional economy in the August 2005 – August 2008 period has been the transfer of agricultural activity into dairy farming and dairy support, with the regional dairy herd increasing six-fold between 1993 and 2007. Regional sheep numbers fell by over two million over the same period, while the deer herd doubled. The correlation between dairy commodity prices, regional farm sales and dairy conversions is evident, particularly with high dairy commodity prices realised between mid-2007 and mid-2008.

Outcome One

"Southland is a great place to live"

The region's history and heritage continues to be recognised, preserved and made available for the enjoyment of the local community and visitors alike. Heritage trails cover a significant portion of the region. The activities of community funding agencies ensure that approximately \$20M per annum is made available for community-based activities. However, Southland residents identified the region's nightlife and arts and culture as two of the five least favourable ratings in 2008.

Outcome Two

"A diverse economy built from our strengths for growth and prosperity"

Southland's economic activity ran counter to the general regional trend of slower economic growth during the monitoring period. The region has a low unemployment rate compared to the national average for the year ending March 2008, although the average hourly earnings of both male and female workers throughout the region and the average weekly income are consistently below the New Zealand average.

Outcome Three

"Safe places in a caring society that is free from crime"

Land Transport New Zealand (now the New Zealand Transport Agency) has estimated that the social cost of road crashes within the Southland Region in 2007 totalled \$129.2M. General crash trends show that in the Invercargill City Council and Gore District Council areas, significant numbers of crashes occurred on wet roads or at intersections, while wet roads or night time crashes accounted for a significant number of crashes in the Southland District Council area. Recorded violent offending statistics for the year ending 31 December 2007 were skewed because Southland Police targeted particular categories of offending and offenders. Recorded crime in the categories of drugs and antisocial behaviour, dishonestly, property damage, property abuse and administrative did not vary significantly for the 2005- 2008 period.

Outcome Four

"We are healthy people"

The available information suggests that the life expectancy of Southland males and females is lower than national and OECD figures. The results of the 2007/08 Active New Zealand Survey conducted by Sport and Recreation New Zealand indicated that Southland adults are more likely than New Zealanders as a whole to undertake 30 minutes of physical activity a day over a 5 to 7 day period. Housing in the region has become steadily less affordable since May 2005, although Southland's housing remains the most affordable housing in New Zealand. An estimated 86 percent of the region's housing stock was constructed prior to 1980, of which approximately 4 percent has been retrofitted with insulation. Southland children and adults appear less likely to see a general practitioner than the national trend, although the proportion of children and adults who had an unmet need to visit a general practitioner was significantly lower than the national average.

Outcome Five

"Strong, effective leadership taking us into the future"

Voter participation in the 2004 and 2007 local authority elections with in the Southland Region compared favourably with national trends, with the overall turnout in local authority, mayoral, district health board and licensing trust elections all exceeding the national turnout. While voter participation in the 2005 general election was slightly lower than the national turnout, this trend was reversed in the 2008 general election, with the percentage of votes cast to electors on the master roll slightly exceeding the national percentage.

Outcome Six

"A treasured environment which we care for and which supports us now and into the future"

The Enviroschools initiative is well supported by the region's local authorities and other agencies such as the Department of Conservation and WasteNet Southland with thirteen schools in Southland currently part of the Enviroschools programme. The monitoring of air quality in Invercargill City and Gore District indicates that emissions sometimes exceed the maximum guidelines between mid-May and mid-August. Southland's marine reserves in the Fiordland and Rakiura National Parks preserve a remarkable range of diverse habitats and species. Southland faces the challenge of how best to recycle an annual amount of waste equivalent to a rugby field filled six storeys high with rubbish.

Outcome Seven

"A well-educated and skilled community continually seeking further opportunities to learn"

There is an observable shortage of early childhood services in the Southland Region. The number of students who left secondary school with little or no formal attainment had dropped from 10 percent in 2004 to 8.2 percent in 2006, although 35.6 percent of people aged 15 years and over in Southland had no formal qualifications, compared with 25.0 percent for New Zealand. The Zero Fees scheme offered by the Southern Institute of Technology has enhanced educational opportunities for all students, including non-traditional users of tertiary education.

Southland's Community Outlook

It is intended that ongoing community consultation will occur as a result of the publication of this report and the reinvigoration of public debate on the future direction of the region. Community-based monitoring will be established, as appropriate, to provide more localised and timely data against which to monitor the achievement of community outcomes.

Contents

Southland's Community Outcomes	3
Preface	5
Summary and conclusions	6
Introduction	10
Summary - Purpose of the Monitoring Report	
Community Outcomes	
Our Way Southland	
Monitoring Southland's Community Outcomes	
Data collection and sources	
Timetable	
Regional Snapshot	12
Southland 2006	
Outcomes Snapshot	15
Southland's Dairy Boom	
Outcome One	21
"Southland is a great place to live"	
Outcome Two	27
"A diverse economy built from our strengths for growth and prosperity"	
Outcome Three	33
"Safe places in a caring society that is free from crime"	
Outcome Four	37
"We are healthy people"	
Outcome Five	49
"Strong, effective leadership taking us into the future"	
Outcome Six	55
"A treasured environment which we care for and which supports us now and into the future"	
Outcome Seven	63
"A well-educated and skilled community continually seeking further opportunities to learn"	

Introduction

Summary - Purpose of the Monitoring Report

The Southland's Community Outcomes: Monitoring Report for the period 2005 -2008 uses a set of indicators to establish the progress which has been made towards the achievement of the seven community outcomes which were first identified for the Southland Region in 2005.

As will be seen from the scope of both the outcomes and the indicators, the regional perspective of the Our Way Southland project clearly demonstrates the collaborative approach which is necessary in order to best achieve the outcomes most desired by Southlanders. The contribution made by Southland's local authorities to the achievement of community outcomes is already acknowledged in the annual and long-term plans of all four Councils. However, the achievement of the outcomes can only be assured by the successful combination of the resources of all sectors of the Southland community – local and central government agencies, and the business and volunteer sectors. The monitoring of outcomes therefore enables the identification of the progress which is being made towards the achievement of Southland's community outcomes, and implementation of collaborative solutions in order to better realise each outcome.

Community outcomes

A community outcome defines what is important for the current and future Social, Economic, Environmental and Cultural well-being of a community. The Local Government Act 2002 requires local authorities to identify community outcomes 'not less than once every 6 years', and to monitor and report on progress towards the achievement of the identified outcomes 'not less than once every 3 years'.

Our Way Southland

Since 2003, Southland's community outcomes have been identified and monitored on a regional basis by the Our Way Southland project. This project is supported by all four of Southland's local authorities - Environment Southland, the Invercargill City Council, the Southland District Council and the Gore District Council - and reports to the Shared Services Forum, a collaborative arm of the four councils.

Following an extensive community consultation process, the seven Community Outcomes were identified for the Southland Region:

1. Southland is a great place to live.
2. A diverse economy built from our strengths for growth and prosperity.
3. Safe places in a caring society that is free from crime.
4. We are healthy people.
5. Strong effective leadership taking us into the future.
6. A treasured environment which we care for and which supports us now and into the future.
7. A well-educated and skilled community continually seeking further opportunities to learn.

The seven statements describe the outcomes desired by the Southland community for the period August 2005 to August 2011. The principal outcomes, together with intermediate outcomes and activities, were incorporated into the Our Way Southland Community Outcomes Report which was launched on 11 August 2005.

Monitoring Southland's Community Outcomes

In accordance with Section 91 of the Local Government Act, the first monitoring report covers the period August 2005 to August 2008, being the first three years of the Our Way Southland Community Outcomes Report. The scope and format of the report have been determined by a number of factors, including the availability of data for the period August 2005 to August 2008, the relevance of data to the seven community outcomes and associated intermediate outcomes, and the desirability of illustrating both localised (within each of the three territorial local authorities) and regional trends and comparing these with national trends.

Data collection and sources

The identification of specific indicators has been greatly assisted by the work of central and local government agencies, particularly the Department of Internal Affairs, Statistics New Zealand, the Ministry for the Environment, the Ministry of Social Development, the Ministry of Economic Development, the Ministry for Culture and Heritage, Choosing Futures Waikato and MARCO, and Future Taranaki.

The report is divided into seven sections, with each of the outcomes and associated intermediate outcomes considered separately. A select number of indicators have been utilised to establish baselines for each outcome against which the future achievement of that outcome can be monitored. The data in the report has been compiled from a variety of sources, including Statistics New Zealand, the New Zealand Police, the Ministry of Education, the Ministry of Social Development, the Department of Internal Affairs, Land Transport New Zealand and the Southland District Health Board, as well as the four Southland local authorities and Venture Southland.

A longer-term goal of the Our Way Southland monitoring and reporting programme is to produce a series of linked indicators, whereby a collective description of local conditions will provide a regional perspective. Similarly, such regional indicators with local variations will permit comparisons to be drawn with other regions and with national trends. The combination of indicators may also permit a more sophisticated understanding of regional and local issues. For instance, mapping areas of socio-economic deprivation, and then comparing or overlaying this indicator with other indicators such as the quality of housing stock, methods of home heating, reported medical conditions, levels of educational achievement, recorded crime and so on can build up a detailed picture of a community in need, and help indicate where assistance might best be directed.

In the meantime, it must be noted that care should be taken when making comparisons between the indicators used in this report in respect of each of the seven outcomes, because of differences in boundaries, geographical areas, or in the data sets or timeframes used to compile the information.

Timetable

The release of the Our Way Southland Community Outcomes Report in August 2005 established the following basic reporting timetable:

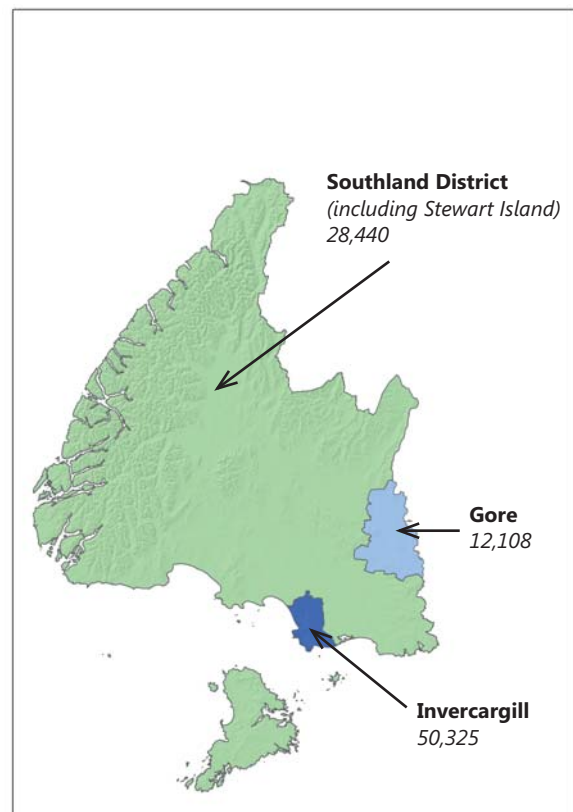
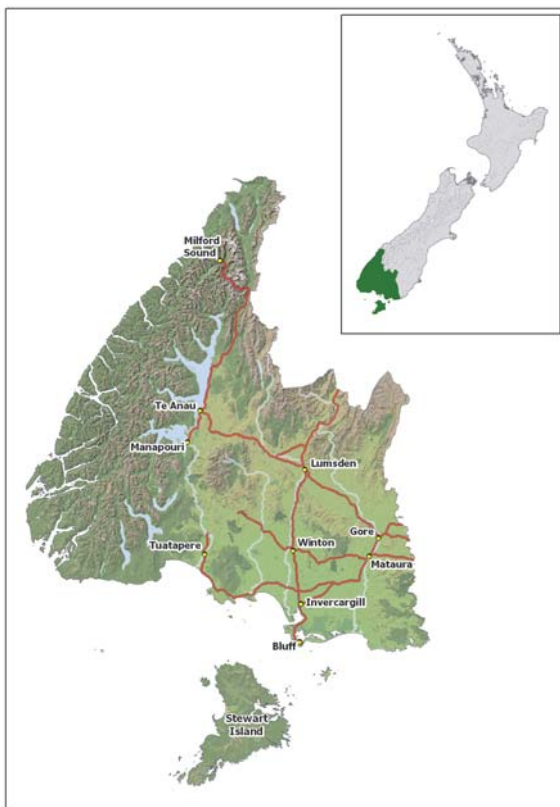
- Monitoring report – first due for the August 2005-2008 period, and thereafter not less than once every three years.
- Community Outcomes – to be re-identified no later than August 2011, and thereafter not less than once every six years.

Regular interim updates on the results of the monitoring of outcomes will also be produced, to ensure that the outcomes which have been identified by the Our Way Southland project remain relevant to the Southland community.

2006 Regional Snapshot

Southland Statistics from the Population Census 2006

- The Southland Region covers an area of 33,963 square kilometers and has 3,400 kilometers of coastline.
- 53 percent of the region is managed as conservation estate. The two national parks in the region are Fiordland (1,257,000 hectares) and Rakiura (157,000 hectares).
- Farms occupy 85 percent of all non-conservation land.
- 90,873 people usually lived in the Southland Region in 2006. This was a decrease of 129 people, or 0.1 percent, since the 2001 Census.
- Southland's population ranked 11th in size out of the 16 regions in New Zealand.
- The region had 2.3 percent of New Zealand's population.



Usually Resident Population in 2006

	Invercargill City Council	Southland District Council	Gore District Council	Southland Region
Total	50,325	28,440	12,108	90,873
Male	24,345 (48.4%)	14,883 (52.3%)	5,943 (49.1%)	45,171
Female	25,980 (51.6%)	13,557 (47.7%)	6,165 (50.9%)	45,702

Source: <http://www.stats.govt.nz/census/census-outputs/quickstats>

Population by Sex and Age group in 2006¹

Age Group	Invercargill City Council			Southland District Council			Gore District Council			Regional Totals
	Male	Female	Total	Male	Female	Total	Male	Female	Total	
0-4	1,641	1,596	3,234	1,074	972	2,046	390	369	759	6,039
5-9	1,704	1,656	3,360	1,101	990	2,091	393	417	807	6,258
10-14	1,926	1,758	3,681	1,275	1,032	2,310	504	489	993	6,984
15-19	1,848	1,803	3,654	996	837	1,833	429	399	831	6,318
20-24	1,581	1,698	3,279	747	639	1,389	288	270	558	5,226
25-29	1,455	1,524	2,979	777	726	1,503	264	270	534	5,016
30-34	1,527	1,638	3,165	945	939	1,884	324	378	702	5,751
35-39	1,629	1,830	3,459	1,029	1,068	2,097	393	399	789	6,345
40-44	1,878	2,022	3,897	1,236	1,185	2,421	495	492	987	7,305
45-49	1,830	1,968	3,795	1,185	1,116	2,298	504	474	981	7,074
50-54	1,665	1,602	3,264	1,101	933	2,037	399	402	801	6,102
55-59	1,470	1,479	2,949	978	867	1,845	408	339	747	5,541
60-64	1,137	1,152	2,286	780	618	1,398	279	309	585	4,269
65-69	981	1,074	2,055	606	552	1,158	264	279	543	3,756
70-74	783	927	1,710	450	405	855	222	264	486	3,051
75-79	669	864	1,530	336	300	633	195	228	423	2,586
80-84	390	711	1,101	174	219	390	117	201	318	1,809
85 plus	237	687	924	90	156	249	78	186	264	1,437
Totals	24,345	25,980	50,325	14,886	13,554	28,440	5,943	6,168	12,108	90,873

Source: Statistics New Zealand, 2006 Census: Regional Summary Tables.

- The median age (half are younger, and half older, than this age) was 38.0 years for people in Southland Region. For New Zealand as a whole, the median age was 35.9 years.
- 13.9 percent of people in Southland Region are aged 65 years and over, compared with 12.3 percent of the total New Zealand population.
- 21.2 percent of people were aged under 15 years in Southland Region, compared with 21.5 percent for all of New Zealand.

¹ This data has been randomly rounded by statistics New Zealand to protect confidentiality. Individual figures may not add up to totals, and values for the same data may vary in different tables

Ethnic Composition in 2006

Ethnicity	Invercargill City Council	Southland District Council	Gore District Council
European	44,847 (89.1%)	26,439 (92.9%)	11,004 (90.9%)
Maori	6,690 (13.3%)	2,613 (9.2%)	1,116 (9.2%)
Pacific Peoples	1,233 (2.5%)	162 (0.6%)	69 (0.6%)
Asian	741 (1.5%)	306 (1.1%)	102 (0.8%)
Other	105 (0.2%)	48 (0.2%)	9 (0.7%)

Source: <http://www.stats.govt.nz/census/census-outputs/quickstats>

- 78.6 percent of people in Southland Region belonged to the European ethnic group, compared with 67.6 percent for New Zealand as a whole.
- 11.8 percent of people in Southland Region belonged to the Māori ethnic group, compared with 14.6 percent for all of New Zealand.

Household Composition in 2006

Household Composition	Invercargill City Council	Southland District Council	Gore District Council
Couples with Children	5,172 (26.3%)	3,573 (33.9%)	1,371 (28.8%)
Couples without Children	5,499 (28.0%)	3,579 (34.0%)	1,443 (30.3%)
Multi-family	243 (1.2 %)	75 (0.7%)	30 (0.6%)
One parent family	2,442 (12.4%)	642 (6.1%)	411 (8.6%)
One person	5,364 (27.3%)	2,337 (22.2%)	1,344 (28.3%)
Other multi-person	936 (4.8%)	333 (3.2%)	153 (3.2 %)
Totals	19,653	10,539	4,755

Source: <http://www.stats.govt.nz/census/census-outputs/quickstats>

- One-family households made up 69.1 percent of all households in Southland Region. For New Zealand as a whole, one-family households made up 69.1 percent of all households.
- 9,045 people (or 25.9 percent) lived in one-person households in Southland Region. Throughout New Zealand, one-person households made up 23.0 percent of all households.
- The average household size in Southland Region was 2.5 people, compared with an average of 2.7 people for all of New Zealand.

Education in 2006

- 32.2 percent of people aged 15 years and over in Southland Region had a post-school qualification, compared with 39.9 percent of people throughout New Zealand.
- In Southland Region, 35.6 percent of people aged 15 years and over had no formal qualifications, compared with 25.0 percent for New Zealand as a whole.

Employment in 2006

- The unemployment rate in Southland Region was 3.8 percent for people aged 15 years and over, compared with 5.1 percent for all of New Zealand.
- The most common occupational group in Southland Region was 'Managers', while 'Professionals' was the most common occupational group in New Zealand.

Income in 2006

- For people aged 15 years and over, the median income (half earn more, and half less, than this amount) in Southland Region was \$23,200. This compared with a median of \$24,400 for all of New Zealand.
- 44.3 percent of people aged 15 years and over in Southland Region had an annual income of \$20,000 or less, compared with 43.2 percent of people for New Zealand as a whole.
- In Southland Region, 14.3 percent of people aged 15 years and over had an annual income of more than \$50,000, compared with 18.0 percent of people throughout New Zealand.

Outcomes Snapshot

Southland's Dairy Boom

Relevance: A key feature of the Southland regional community in the August 2005 to August 2008 period is the change which has resulted from the intensification of land use, particularly the transfer of agricultural activity into dairy farming and dairy support. The following group indicators outline the scale and scope of this change, the effects of which can further be observed within the seven community outcomes which are examined in the body of this report.

Indicator 1: Stock numbers in the Southland Region 1993-2008

Livestock	1993	1994	1995	1996	1999	2002	2003	2004	2005	2006	2007	2008
Sheep	7,806,683	7,850,791	7,687,777	7,457,393	6,738,097	5,950,657	5,855,296	5,966,919	5,950,627	5,928,761	5,662,387	4,739,000
Dairy Cattle	70,910	114,378	125,806	137,552	232,966	356,220	347,793	349,021	348,075	375,911	432,642	496,000
Beef Cattle	174,537	202,538	214,236	204,107	229,830	-	-	-	-	-	208,000	191,000
Deer	161,816	184,512	186,216	190,630	393,371	351,58	356,948	390,423	371,374	347,537	307,524	270,000
Pigs	9,701	7,235	10,847	8,907	2,602	7,376	3,441	3,322	2,734	-	4,303	-

Source: www.statistics.co.nz

Livestock Numbers by Region June 2007 – June 2008

	Sheep (000s)		Dairy Cattle (000s)		Beef Cattle (000s)		Deer (000s)	
	2007	2008	2007	2008	2007	2008	2007	2008
Northland	534	504	367	392	496	508	8	7
Auckland	288	265	113	116	157	143	12	12
Waikato	2,660	2,169	1,669	1,717	677	576	117	92
Bay of Plenty	385	346	299	315	120	103	54	52
Gisborne	1,825	1,680	8	16	287	287	27	23
Hawke's Bay	3,624	3,691	80	100	438	493	88	84
Taranaki	656	637	590	572	137	132	4	4
Manawatu-Wanganui	6,747	5,917	393	425	681	583	104	84
Wellington	1,822	1,779	93	104	156	140	16	17
Total North Island	18,542	16988	3,613	3,758	3,148	2,966	430	375
Tasman	348	S	64	71	51	50	21	19
Nelson	8	9	2	C	1	2	C	C
Marlborough	579	518	24	34	66	57	C	C
West Coast	54	43	152	153	30	35	42	35
Canterbury	7,167	6,063	755	832	585	534	395	341
Otago	6,031	5,343	218	233	292	291	188	167
Southland	5,662	4,739	433	496	208	191	308	270
Chatham Islands	69	64	-	C	12	12	-	-
Total South Island	19,918	17,100	1,648	1,821	1,245	1,171	966	848
Total New Zealand	38,460	34,088	5,261	5,578	4,394	4,137	1,396	1,223

Source: Statistics New Zealand Agricultural Production Statistics: June 2008 (final).

Notes: The 2008 Agricultural Production Survey was a sample survey and therefore estimates are subject to sample error. Figures may not add to the totals due to rounding. Percentage changes are calculated on unrounded numbers. C Confidential; S Suppressed; - nil or zero.

Indicator 2: Farm Types and Sales in the Southland Region 2004-2008

Southland Farms by Farm Type as at 30 June 2007

Sheep Farming	1,762	Nursery (under cover)	3
Beef Cattle	321	Nursery (outdoors)	27
Sheep-Beef	387	Floriculture (under cover)	3
Grain-sheep and Grain-Beef	36	Floriculture (outdoors)	9
Other Grain growing	18	Vegetable Growing (under cover)	3
Other Crops	81	Vegetable Growing (outdoors)	21
Dairy Cattle	630	Grape	3
Poultry (eggs)	6	Berry Fruit	3
Deer	279	Stone Fruit	3
Horse	78	Other Fruit and Tree Nut	9
Pig	9		
Other livestock	27		
Forestry	183		
Other	36		

Source: Statistics New Zealand, 2007 Agricultural Production Census (Final Results): June 2007.

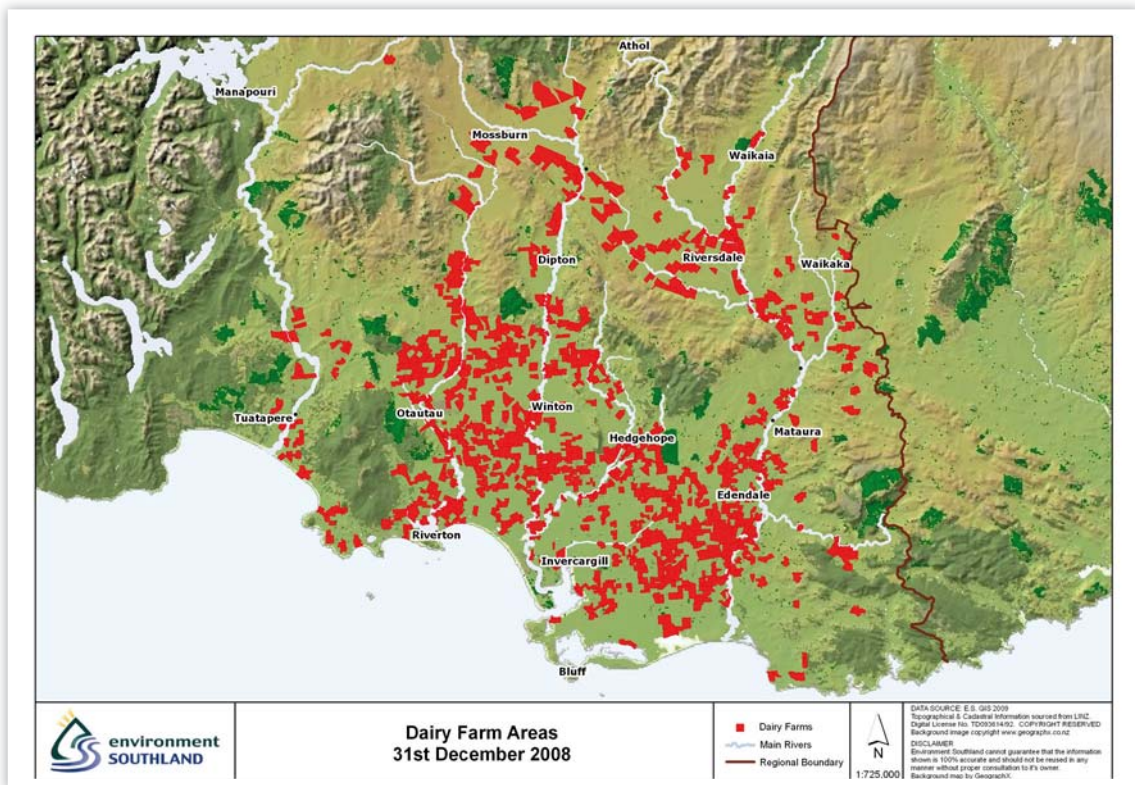
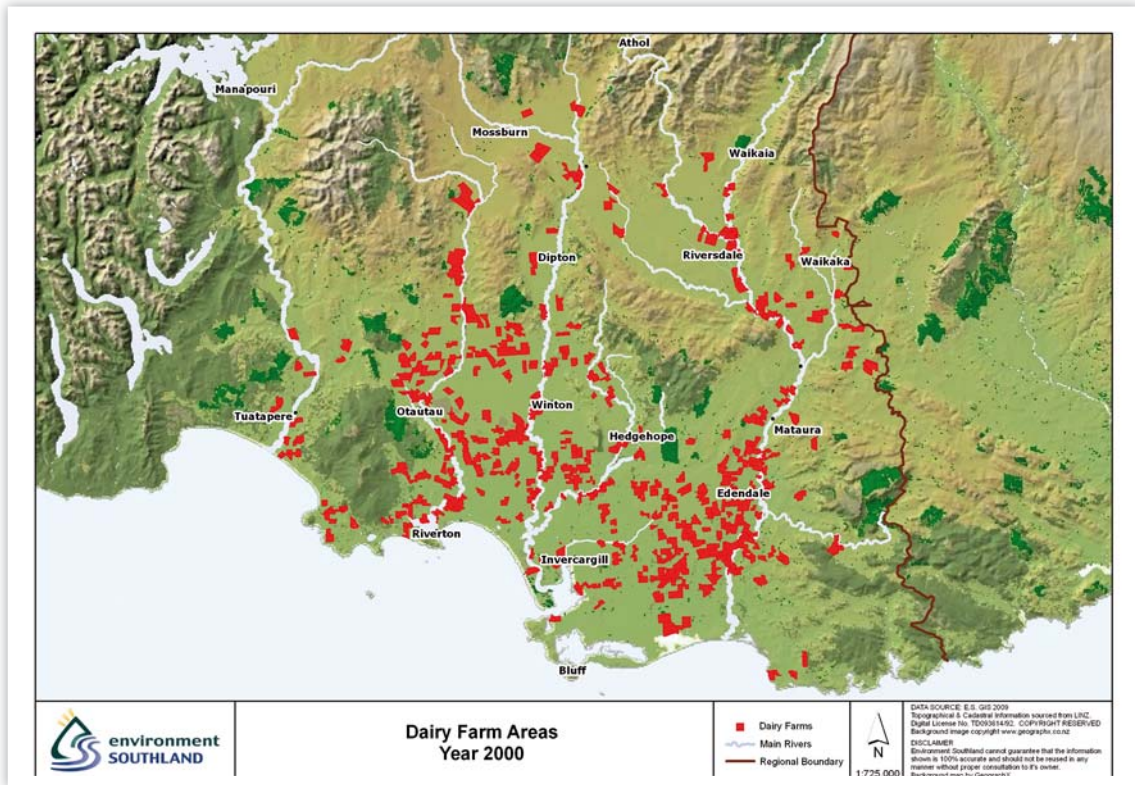
Notes: Figures have been randomly rounded to protect confidentiality. Farm types are classified according to the Australian and New Zealand Standard Industrial Classification 2006 (ANZSIC06).

Median Prices and Numbers of Sales of Farms (excluding Lifestyle Blocks) by Region 2005-2008

Region	August 2005		April 2006		September 2006		April 2007		September 2007		April 2008		August 2008	
	Median Sales \$000	Number of Sales	Median Sales \$000	Number of Sales	Median Sales \$000	Number of Sales	Median Sales \$000	Number of Sales	Median Sales \$000	Number of Sales	Median Sales \$000	Number of Sales	Median Sales \$000	Number of Sales
Northland	\$468	10	\$673	50	\$594	34	\$900	42	\$875	39	\$1,650	43	\$1,153	32
Auckland	\$999	10	\$888	51	\$980	40	\$1,350	42	\$1,580	31	\$1,250	33	\$1,200	21
Waikato	\$1,235	13	\$2,200	77	\$1,332	43	\$2,150	69	\$1,285	46	\$2,700	111	\$2,050	52
Bay of Plenty	\$775	17	\$945	50	\$905	32	\$1,213	48	\$935	32	\$1,500	49	\$1,500	26
Gisborne	\$245	1	\$1,200	13	\$1,100	12	\$1,044	12	\$1,625	10	\$1,290	16	\$2,525	3
Hawkes Bay	\$705	11	\$900	21	\$1,042	21	\$1,500	25	\$1,300	20	\$1,550	29	\$1,162	17
Taranaki	\$340	4	\$1,461	42	\$798	10	\$1,631	40	\$1,476	16	\$1,150	90	\$1,533	20
Manawatu														
Wanganui	\$700	17	\$1,400	63	\$1,068	38	\$915	50	\$1,136	45	\$1,600	63	\$1,860	55
Wellington	\$600	5	\$498	14	\$1,400	13	\$885	16	\$1,410	7	\$1,210	16	\$3,000	7
Nelson	\$349	14	\$620	33	\$790	34	\$595	32	\$815	29	\$1,157	24	\$1,300	21
West Coast	\$485	7	\$1,356	10	\$1,050	17	\$1,776	13	\$1,900	9	\$2,000	15	\$2,527	16
Canterbury	\$1,030	22	\$873	84	\$1,050	56	\$1,050	87	\$1,550	100	\$2,003	128	\$1,781	100
Otago	\$800	19	\$897	38	\$700	45	\$860	33	\$1,100	64	\$1,968	66	\$1,800	55
Southland	\$833	20	\$998	52	\$900	64	\$1,350	66	\$1,800	109	\$2,378	103	\$1,950	91
NZ Totals	\$808	170	\$1,090	598	\$1,000	459	\$1,190	575	\$1,320	557	\$1,810	786	\$1,742	516

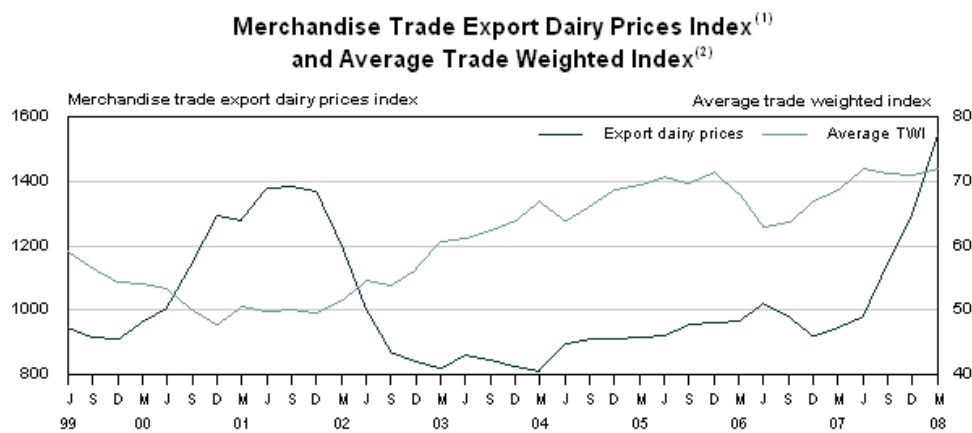
Source: Real Estate Institute of New Zealand News Releases and Rural Market Reports August 2005 – April 2009.

Indicator 3: Dairy conversions in Southland 2000-2008



Source: Environment Southland

Indicator 4: National Dairy commodity prices 2006-2008

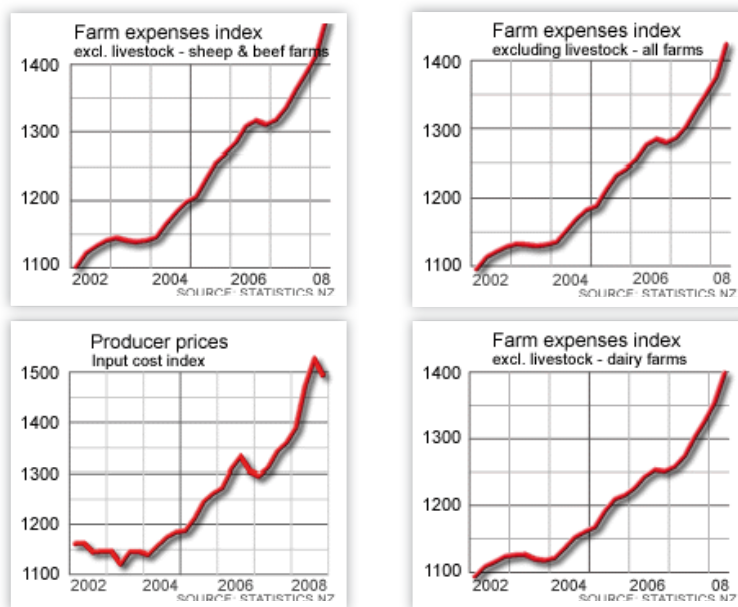


(1) Base: June 2002 quarter (=1000).
 (2) Base: June 1979 month (=100).

Source: Statistics New Zealand, *The rising cost of food in New Zealand*, July 2009.

The price of dairy products rose in 2001-2002 (when the low exchange rate of the New Zealand dollar against the US dollar boosted export profits) before falling in 2003-2004, and rose again in 2004-2005 and then fell in 2006-2007. The most significant increase in the price of dairy products occurred from mid-2007 with a 63 percent rise in the year to the March 2008 quarter, driven by demand from developing Asian markets (most especially China). Climatic conditions also contributed to the sharp rise in dairy prices, when worldwide dairy production suffered due to severe droughts in Australia, widespread flooding in Argentina, and the consequent exhaustion of European Union and American intervention stockpiles intended to bridge the gap between demand and production. World prices for dairy products began to decline after November 2007, falling 11 percent by May 2008. As at October 2008, the national markets for butter, skim milk powder and whole milk power were all easing, while the cheddar market steadied.

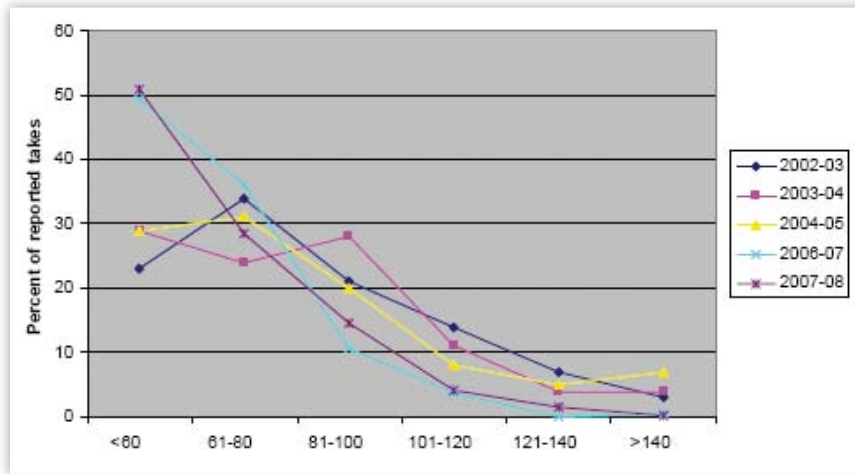
Indicator 5: National Farm Expenses 2002-2008



Source: www.agridata.co.nz

Dairy farmers worldwide faced increased production costs associated with rapidly increasing fuel costs, and higher grain prices associated with the international production of biofuels. In New Zealand for the year to the March 2008 quarter, feed, grazing, cultivation and harvesting costs for dairy farms increased 14.9 percent. As at August 2008, national on-farm expenses were rising much faster than overall producer input costs, with the biggest increases coming from rising fuel and interest costs. Operating costs rises were less for dairy farms, but sheep and beef farms saw costs growing at a much faster rate.

Indicator 6: Dairy water takes in the Southland Region 2002-2008



Source: Environmental Compliance Monitoring Report 2007/08, Compliance Division, Environment Southland, 2008.

This graph clearly illustrates the change over time in the proportion of consented water take in the Southland Region actually reported as having been utilised, and indicates that it has become more common to secure sufficient consented water volume to accommodate future dairy herd expansion. The graph also shows the decline in both excess and gross excess water takes for the 2007-08 period.

Outcome One

“Southland is a great place to live”

Intermediate Outcomes

- 1.1 We value our history and heritage
- 1.2 We have a choice of quality places to go and things to do
- 1.3 We embrace and respect a diverse community
- 1.4 We are proud to be Southlanders
- 1.5 We live in a creative place



Indicators: Four indicators have been utilised in this section to provide a picture of how history and heritage are valued within the Southland Region, how community activities are identified and supported by the region's principal funding agencies, and how Southland residents perceive their quality of life.

Data Sources: New Zealand Historic Places Trust Register; Southland Coastline Heritage Inventory Project; <http://www.comtrustsouth.org.nz/>; <http://www.ilt.co.nz/>; <http://www.mltgore.co.nz/html>; Southland Perceptions Study by Innovative Business Solutions, Southern Institute of Technology for Venture Southland, March 2008.

Indicator 1: Identification and Preservation of local heritage sites

a. New Zealand Historic Places Trust registrations of Category I and II buildings and Historic Areas in the Southland Region by Territorial Local Authority 1984 - 2003

	Invercargill City Council	Southland District Council	Gore District Council
Category I	1984 – 8	1985 – 1	2000 - 1
	1988 – 2	1987 – 1	
	1990 – 3	1988 – 1	
	2008 - 1	1989 – 1	
		1992 – 1	
		1994 - 2	
		1998 – 1	
		2007 - 4	
Category II	1983 – 53	1983 – 6	1995 - 2
	2001 – 2	1990 – 3	1996 - 1
	2008 - 1	1996 – 1	
		1998 - 1	
Historic Area	1999 - 1	1990 – 2	
		1996 - 1	
		2003 - 1	
Totals	71	27	4

Regional Totals	Category I	Category II	Historic Area
	27	70	5

Source: www.historic.org.nz/Register

Category I: a place of special or outstanding historical or cultural significance or value.

Category II: a place of historical or cultural significance or value.

Historic Area: groups of related historic places such as a geographical area containing a number of properties or structures, a heritage precinct or a cultural landscape.

b. Southland Coastal Heritage Inventory Project results 2008

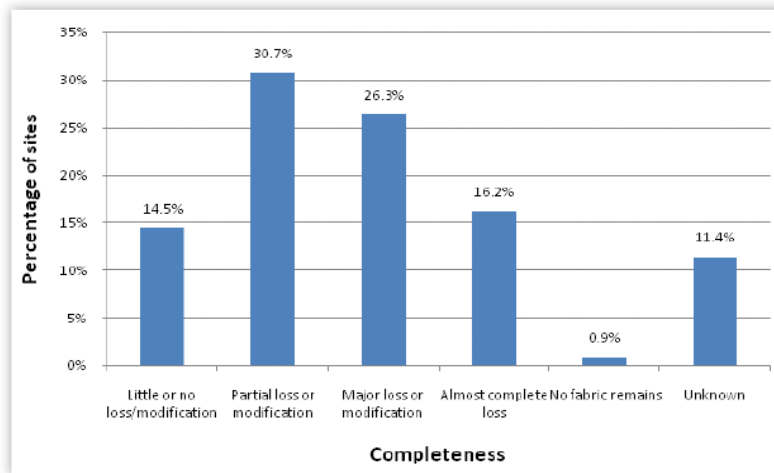
Relevance: The Southland Coastal Heritage Inventory Project represents a complete archaeological survey of Maori and early European archaeological and heritage sites on Southland's mainland coastal marine environment between Waiparau Head and Rowallan Burn. The project also highlights the rapidly changing nature of the coastline, and the need to record and preserve Southland's coastal heritage from the effects of erosion, land use and other human activities.

Total Number of Recorded Sites

Number of sites	2004	2006	Total
Number of previously recorded sites	202	115	317
Number of recorded sites eliminated from project	45	7	52
Number of sites searched for	157	118	275
Number of sites searched for and found	70	50	120
Number of sites searched for but not found	87	68	154
Number of new sites found	57	52	109
Total number of sites assessed including new sites	127	95	228

Source: Southern Pacific Archaeological Research, Southland Coastal Heritage Inventory Project – Waiparau Head to Rowallan Burn, Dunedin, April 2008.

Completeness of located coastal sites heritage sites



Source: Southern Pacific Archaeological Research, Southland Coastal Heritage Inventory Project – Waiparau Head to Rowallan Burn, Dunedin, April 2008.

Current level and trends: Of 317 archaeological sites located on Southland's mainland coastline, 52 sites were not inspected because of problems associated with their relocation. Of the sites for which a search was made, but which could not be located, a number had been destroyed by erosion, or had been obscured by 'development progress' or vegetation. It is therefore estimated that approximately half of all coastal sites have been lost since they were first recorded.

Indicator 2: Heritage Activities within the Southland Region

a. Heritage sites within the Southland Region have been progressively made available to the local community and visitors alike with the development of heritage trails:

Invercargill City Council

Bluff Heritage Trail: Featuring seventeen sites, the trail begins at the Greenhills Church and takes you to a variety of sites including the Greenpoint Walkway, the Monica, several buildings and homes of historic interest, the old Bluff Cemetery and Stirling Point.

Invercargill Heritage Trail: This half day tour is best undertaken by vehicle, with stops for walking in gardens, bush and the Invercargill city centre. The tour can start at any point. The Heritage Trail highlights Invercargill's wide variety, proximity and coherence of historic architectural style that makes the city unique. The prosperity of the 1880's and 1890's is evident in the wealth of quality Victorian buildings and examples of Edwardian architecture. The large number of Art Deco style buildings indicates the Depression of the 1930's, while the wool boom in the 1950's is evident by buildings in the style of the modernist movement.

Southland District Council

The Catlins Coastal Heritage Trail is a detour off the Southern Scenic Route, which runs between Dunedin and Te Anau. The trail is a series of walks and places of interest linked by easy drives. At least five hours are required to visit all the places of interest and complete all the walks.

The Northern Southland Heritage Trail, He Ara Manatunga a Raki a Tonga, spans a distance of 110 km between Kingston and the Josephville Hill. Fifteen sites marked with Heritage Trail signs feature on the trail, and can be visited in any order.

The Riverton-Aparima South Coast Trail runs some 80kms around the South Coast and consists of 14 stops. The trail can be travelled in either direction.

Takitimu Heritage Trail: This trail can be found inland from the Southern Scenic Route, and can take four or five hours to complete if started from Riverton. To enter the trail it is necessary to travel from Riverton to Otautau then on to Wreys Bush where the official Takitimu Heritage Trail commences. At Wreys Bush is a detailed notice board outlining the tour. The trail is on well maintained sealed roads, and is approx 40km long and takes in the coal mining towns of Nightcaps and Ohai and the villages of Wreys Bush, Tinkertown and Wairio.

The Winton Heritage Trail is 10km long and can be driven in 15 minutes. There are 14 sites throughout this trail.

Gore District Council/Southland District Council

Southern Odyssey Heritage Trail, State Highway 94 and 6, between Gore, Mossburn and Garston. Up to ten sites along State Highway 94 from Gore to Lumsden and Mossburn, and on State Highway 6 as far as Garston, are highlighted as part of the Southern Odyssey road journey. The trail encompasses some 150 kilometres.

b. Museum developments within the Southland Region ensure that local and regional history is preserved and presented for the education and enjoyment of local residents and visitors alike. Museum developments within the August 2005 – August 2008 reporting period include:

- The Te Hikoi Southern Journey heritage centre, museum and gallery, Riverton, which presents the early bi-cultural history of the Riverton area, including the seasonal lifestyle of early Maori, the privation of early sealers and the perilous adventures of shore whalers who forged an enduring peace with Maori through intermarriage and enterprise. This 1.7 million dollar project was opened on the 8th December 2007.

c. Southland 150th celebrations 2006.

- Southland, and Bluff and Invercargill in particular, celebrated the 150th anniversary in 2006 of the establishment of Invercargill and the systematic development of the Southland Region.
- The history of the first 150 years of the Southland Region was comprehensively recorded in the Dan Davin Literary Foundation's multi-authored volume *Murihiku - The Southland Story* which was published in 2006 with the support of the Community Trust of Southland and the Southland Regional Heritage Development Fund.

Indicator 3: Community Funding within the Southland Region

Relevance: A feature of community funding within the Southland Region is that grants are available from the Community Trust of Southland, the Invercargill Licensing Trust and the Matura Licensing Trust.

The **Community Trust of Southland** is a community owned grant-making organisation that supports charitable or non-profit groups and organisations by giving grants for projects or initiatives which benefit the Southland community in the following sectors: arts, culture and heritage; community economic development; education, environment, health and social services and sport and recreation. The Trust grants between \$8-10 million to the Southland community each year, providing funding up to \$5,000, between \$5,000 and \$50,000 and major grants over \$50,000, as well as scholarships in the fields of art, community leadership, Murihiku Health, sport and tertiary education.

The **Invercargill Licensing Trust** and the **ILT Foundation** provide donations and sponsorships to an annual level of approximately \$10 million to over 500 organisations. Major initiatives include Stadium Southland and the ILT Velodrome in Invercargill, which are great examples of the special community initiatives that the Trust has been able to instigate/support to the benefit of our community. The Invercargill Licensing Trust and the ILT Foundation are a major funder of many sports, including Rugby, Touch Rugby, Netball, Tennis, Cycling, Golf, Cricket, Bowls, Rowing, Swimming (including the Kids Learn to Swim Programme). The total education spend by the Invercargill Licensing Trust and the ILT Foundation was almost \$5 million over the past four years. The Interactive Whiteboard Project was officially launched in March 2006, following an 18-month trial of the technology in Invercargill schools. Each interactive whiteboard package is worth \$12,000 and includes an interactive whiteboard, digital camera, digital projector, wireless slates and wireless keyboards. The combination of video, colour and sound, along with access to a range of resources, means teachers can provide interactive material across all areas of the curriculum. The ILT Tertiary Education Scholarship Programme was introduced in 2007 and is designed to select up to 60 Invercargill students each year who will receive a Scholarship to attend a Tertiary Education Institution. Each Scholarship is to a value of \$2,000 per year and is granted for a three year period. In Year 3 (2009) up to 170 Invercargill students will hold ILT Scholarships, the value of which will be \$340,000.

The **Matura Licensing Trust** (MLT) was formed in 1955, and covers an area ranging from Tapanui to Tokanui. Amongst the operational principles of the MLT is the support of the local community by means of the distribution of profits. Community support by the Trust in the past five years has totalled \$5,478,873.79, with the funds coming from MLT operating profits and income from gaming machines operated in Trust premises in conjunction with the Trust's Charitable Foundation. Through these donations the Trust touches every age group and every aspect of life in the MLT area, with over 400 organisations having benefitted from Trust funding in the year ending 31 March 2008. Amongst the projects which have been supported by the MLT are the Multi Sport Centre, the Museum and Visitor Centre, and the St James Theatre, all in Gore. In 2007, in conjunction with St John Ambulance, the MLT funded the distribution throughout the Trust area of free Mobile First Aid Kits to 7,000 households, and \$70,000 worth of defibrillators. The MLT also supports community events including the Gold Guitars, the Hokonui Moonshine Festival and the Hokonui Fashion awards, whilst at the same time assisting an extensive array of school teams and sports and cultural activities.

Indicator 4: Quality of Life Survey 2008

Relevance: The March 2008 Southland Perceptions Study by Innovative Business Solutions, Southern Institute of Technology for Venture Southland provided a more subjective measure of perceptions of the quality of life in Southland, compared, where possible with previous research concluded in 2004, 2002 and 2000.

Southland's top five important factors 2008 (Southland residents)	Southland's top five important factors 2004 (Southland residents)
Overall quality of life	Overall quality of life
Availability of quality healthcare	Availability of quality healthcare
Cost of living	Cost of living
Level of crime	Level of crime
Traffic and congestion	Traffic and congestion/Ability to find a job

Southland's top five most favourable ratings 2008 (Southland residents)	Southland's top five most favourable ratings 2004 (Southland residents)
Overall quality of life	Traffic and congestion
Traffic and congestion	Overall quality of life
Affordability of houses	Affordability of houses
Community and sporting facilities	Tourism destination
Ability to access quality education	Cost of living/Property resale values/Access to quality schooling/ Sporting activities

Southland's five least favourable ratings 2008 (Southland residents)	Southland's five least favourable ratings 2004 (Southland residents)
Nightlife	Nightlife
Availability of quality healthcare	Arts and Culture
Arts and culture	Availability of quality healthcare
Opportunities for career advancement	Availability of tertiary education options
Ability to achieve financial success	Climate

Source: Southland Perceptions Study by Innovative Business Solutions, Southern Institute of Technology for Venture Southland, March 2008.

Outcome Two

“A diverse economy built from our strengths for growth and prosperity”

Intermediate Outcomes

- 2.1 We have a quality infrastructure with potential for growth
- 2.2 We have an innovative and vibrant culture that supports business
- 2.3 We have a business friendly environment in which to operate
- 2.4 We have an economy built on our competitive advantage
- 2.5 We have full employment and rewarding careers
- 2.6 We retain and build on our skills base
- 2.7 We keep the things about living here that we value



Indicators: Five indicators have been utilised in this section, in order to present a snapshot of the region's economic performance, levels of employment, and levels of income.

Data Sources: Statistics New Zealand Southland District Quarterly Reviews; Statistics New Zealand 'Quick Stats About Southland Region'; Ministry of Social Development Quarterly Regional Labour Market Update for March 2008; National Bank Regional Trends Reports; BERL Regional Performance Indicators 2007.



Source: Southport Annual Report 2008.

Indicator 1: Regional GST (\$M)

Relevance: While this is not a measure of the regional Gross Domestic Product, it does provide a key indicator of the level of economic activity in the Southland Region. Statistics New Zealand states that this is an experimental indicator, combining Inland Revenue Department information to the Statistics New Zealand Business Frame, and should therefore be used with caution, particularly on a geographic basis.

Region	2005 (\$M)	2006 (\$M)	2007 (\$M)
Northland	\$738.3	\$1,210.0	\$762.1
Auckland	\$14,187.6	\$13,133.8	\$16,049.7
Waikato	\$2,761.5	\$2,607.0	\$2,881.9
Bay of Plenty	\$1,720.7	\$1,848.6	\$1,966.0
Gisborne	\$248.9	\$247.5	\$269.7
Hawke's Bay	\$1,001.3	\$962.0	\$1,072.7
Taranaki	\$886.1	\$849.7	\$546.9
Manawatu-Wanganui	\$1,316.6	\$1,339.6	\$1,482.6
Wellington	\$5,401.9	\$5,577.3	\$6,867.9
Tasman	\$177.6	\$216.3	\$202.0
Nelson	\$308.8	\$326.7	\$341.5
Marlborough	\$241.0	\$308.6	\$310.1
West Coast	\$110.8	\$138.8	\$153.2
Canterbury	\$3,967.3	\$3,919.3	\$4,333.8
Otago	\$1,443.9	\$1,446.9	\$1,460.7
Southland	\$589.0	\$744.6	\$714.5
New Zealand	\$35,030.1	\$37,069.0	\$48,853.9

Source: Statistics New Zealand, Southland Region Quarterly Review, December 2007.

Current level and trends: The total net GST (sales-purchases) in the Southland Region for the September 2007 quarter was \$714.5 million, or 1.8 percent of the total net GST in New Zealand. The region's total net GST for the year ending September 2007 decreased 1.5 percent from the previous year, compared with a 2.2 percent national increase over the same period.

Indicator 2: Economic Activity

Relevance: A broad picture of economic activity in the region by the combination of a variety of indicators, including employment, business growth and business and consumer confidence.

Territorial Authority	Overall Rank ²			2007 Rank			
	2007	2006	2005	Resident population growth	Full time equivalent employment growth	Real value added (GDP) growth	Business units growth
Tauranga City	1	6	2	8	6	19	5
Central Otago District	2	2	37	4	4	5	33
Queenstown-Lakes District	8	5	1	1	28	36	1
Invercargill City	30	64	66	49	21	24	35
Clutha District	41	66	68	54	46	32	20
Dunedin City	47	49	22	47	49	47	26
Southland District	63	62	49	59	57	50	63
Gore District	65	54	70	68	66	46	60

Source: BERL Regional Performance Indicators 2007, May 2008.

² The BERL ranking covers 72 Territorial Authorities, with 1 representing the greatest positive change and 72 the greatest negative change. TAs with the same rate of change are ranked equally. The Chatham Islands district has not been included in the analysis. The overall ranking is obtained by combining the growth rankings on four of the KPIs – population, employment, value added (labour productivity) and business units.

Current level and trends: The National Bank Regional Trends Report for May 2008 noted that annual economic growth had slowed in the regions during the year ending March 2008, except for Southland, which continued to lead national economic growth trends at 3.4 percent, followed by Taranaki. However, a widespread weakness in regional economic indicators in the March 2008 quarter was noted, including business and consumer confidence, retail trade, employment, house sales, new motor vehicle registrations and building consents.

Business and Economic Research Limited (BERL) produces annual regional performance indicators, and provides an overall ranking for each Territorial Authority, based on four indicators – resident population growth, full time equivalent (FTE) employment growth, real value added (GDP) growth and business units growth – which are given equal rating over a twelve month period. While this is a simplistic measure of economic performance, it does provide the basis for a wider study of regional economic performance over a longer period of time, utilising a wider range of indicators. Tauranga City was ranked first in 2007, followed by the Central Otago District Council. Invercargill City ranked thirtieth, Southland District at sixty-third and Gore District at sixty-fifth.

Indicator 3: Southland Regional Employee Count 2007

Relevance: Statistics New Zealand reintroduced agricultural production into the Business Demographic Statistics for the 2007 year, which has therefore created an imbalance in the figures, making it difficult to ascertain the full effect of the current dairy boom. Nevertheless, the following statistics do provide a snapshot of the principal employers in the Southland Region's industrial sector.

Employees by Industry - Southland Region	February 2006		February 2007	
	Employees	Percentage of Total	Employees	Percentage of Total
Agriculture, Forestry and Fishing	1,870 ³	4.7	7,260 ⁴	15.4
Mining	160	0.4	150	0.3
Manufacturing	9,040	22.7	9,830	20.8
Electricity, Gas and Water Supply	100	0.3	110	0.2
Construction	2,480	6.2	2,560	5.4
Wholesale Trade	1,740	4.4	1,790	3.8
Retail Trade	5,580	14.0	5,690	12.1
Accommodation, Cafes and Restaurants	2,990	7.5	3,120	6.6
Transport and Storage	2,100	5.3	2,200	4.7
Communication Services	280	0.7	200	0.4
Finance and Insurance	780	2.0	850	1.8
Property and Business Services	2,830	7.1	2,830	6.0
Government Administration and Defence	1,010	2.5	1,030	2.2
Education	2,070	5.2	2,710	5.7
Health and Community Services	4,470	11.2	4,610	9.8
Cultural and Recreational Services	950	2.4	920	1.9
Personal and other Services	1,300	3.3	1,350	2.9
Totals	39,740	100.0	47,190	100.0

Source: Statistics New Zealand, Southland Region Quarterly Reviews, June 2007; December 2007.

³ Excludes agricultural production

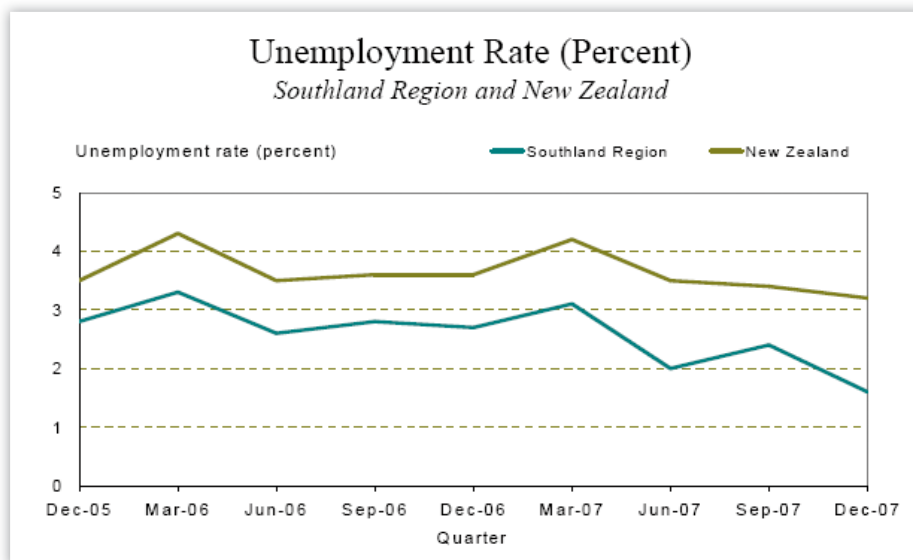
⁴ Note that agricultural production was reintroduced into Business Demographic Statistics for the 2007 year.

Current level and trends: As at February 2006, the total number of employees in the Southland Region, while 0.6 percent less than the total number of employees recorded in February 2005, nevertheless represented 2.3 percent of the total number of employees in New Zealand. By February 2007, Southland employees comprised 2.5 percent of the total number of New Zealand employees. The manufacturing industry consistently employed the greatest number of workers – 22.7 percent of all employees in the region as at February 2006, dropping to 20.8 percent by February 2007.

The working-age population in the Southland Region as at March 2008 was 75,200. The labour force participation rate was 72.0 percent with 54,100 people in the labour force, and 21,100 people 'not in the labour force'.⁵

Indicator 4: Unemployment Rate

Relevance: The unemployment rate is the number of unemployed people expressed as a percentage of the labour force, and reflects the current labour market conditions.



Source: Statistics New Zealand, Southland Region Quarterly Review, December 2007.

Current level and trends: Unemployment in the Southland Region totalled 900 (of a total regional labour force of 54,200) during the December 2007 quarter, a rate of 1.6 percent, down from the 2.7 percent rate for the December 2006 quarter. The New Zealand unemployment rate for the December 2007 quarter was 3.2 percent.

As at March 2008, of the 54,100 people in the labour force, 1,100 (or 2.0 percent) were unemployed, compared with the national average unemployment rate for the year ending March 2008 was 3.6 percent.⁶

⁵ Ministry of Social Development Quarterly Regional Labour Market Update for March 2008, p. 2.

⁶ Ibid, p. 4.

Indicator 5: Income

a. Average Hourly Earnings

Relevance: Income is a key indicator of individual and family wellbeing, demonstrating the ability within a community of individuals to afford essential and non-essential commodities. Average hourly earnings equals the gross total payout to all employees divided by the number of paid hours.

Area	Average Hourly Earnings (\$)					
	June 2007		September 2007		December 2007	
	Male	Female	Male	Female	Male	Female
Southland Region	\$22.03	\$19.95	\$20.01	..S ⁷	\$22.36	\$20.07
Invercargill City	\$22.21	\$19.70	\$22.19	\$19.79	\$22.63	\$19.85
Southland District	\$22.30	\$22.10	\$21.61	\$22.10	\$22.90	\$21.89
Gore District Council	\$20.77	\$17.21	\$22.80	\$19.66	\$19.99	\$17.71
New Zealand	\$24.29	\$20.99	\$24.53	\$21.35	\$24.72	\$21.57

Source: Statistics New Zealand, Southland Region Quarterly Reviews, June 2007; September 2007; December 2007.

Current level and trends: The average hourly earnings for employees in the Southland Region increased 0.1 percent between June and September 2007, and by 1.0 percent between September and December 2007. The national percentage increase in this period was 1.3 percent between June and September 2007, and 1.0 percent between September and December 2007.

b. Average Weekly Income

Relevance: Income is an indicator of the financial return from work, and reflects the economic activity in the region.

	Average Weekly Income (\$)		
	June Quarter		
	2005	2006	2007
Southland	\$547	\$585	\$659
New Zealand	\$586	\$610	\$667

Source: Statistics New Zealand, Southland Region Quarterly Reviews, June 2007; December 2007.

Current level and trends: The average weekly income for people in the Southland Region increased by 12.6 percent between the June 2006 and June 2007 quarters, although the June 2007 Southland average was still 1.2 percent lower than the national average.

⁷ ...S shows that the figure was suppressed due to a large sample error.

Outcome Three

“Safe places in a caring society that is free from crime”

Intermediate Outcomes

- 3.1 We have safe roads
- 3.2 We have safe homes
- 3.3 We have public places safe for children and families
- 3.4 We apprehend and hold law breakers appropriately accountable
- 3.5 We support the victims of crime



Indicators: Three indicators have been utilised in this section to examine road safety, levels of recorded and resolved crime, and perceptions of personal and community safety in the Southland Region.

Data Sources: Land Transport New Zealand Road Safety Issues for Invercargill City Council, Gore District Council, Southland District Council July 2006 and Briefing Notes 2007 and 2008; Statistics New Zealand Crime Tables for the Southern Police District; New Zealand Police Southern District Media Release 1 April 2008.

Indicator 1: Road Crash Statistics for the Southland Region 2005 – 2007

Relevance: This data highlights key road safety issues and can identify ways in which the number of road deaths and injuries may be reduced.

a. Road Trauma and Casualties by environment per Territorial Local Authority.

	2005			2006			2007								
	ICC	SDC	GDC	ICC	SDC	GDC	ICC			SDC			GDC		
Road Trauma	Total	Total	Total	Total	Total	Total	Rural	Urban	Total	Rural	Urban	Total	Rural	Urban	Total
Death	0	6	0	2	6	2	4	1	5	4	0	4	1	1	2
Serious Injury	56	71	18	76	61	14	13	32	45	56	9	65	3	2	5
Minor Injury	264	204	39	326	213	45	46	196	242	189	24	213	19	13	32
Total	320	281	57	404	280	61	63	229	292	249	33	282	23	16	39

Source: Land Transport NZ Road Safety Issues/Briefing Notes per Southland TA, July 2006 – 2008.

b. Crash trends per Territorial Local Authority.

	2005			2006			2007		
	ICC	SDC	GDC	ICC	SDC	GDC	ICC	SDC	GDC
Crash Type									
Fatal	0	6	0	2	6	2	4	4	2
Serious Injury	47	61	15	65	56	7	37	53	4
Minor Injury	165	117	29	198	115	33	162	115	23
Non-Injury	334	116	67	279	147	63	339	128	79

Source: Land Transport NZ Road Safety Issues/Briefing Notes per Southland TA, July 2006 – 2007.

Current level and trends: Much detail is available per Territorial Local Authority, with different problems noted per Territorial Local Authority for the 2003-2007 period:

Invercargill City Council:

1. Local roads, worst month March, worst day Friday, 32 percent on wet roads, 31 percent at night, 49 percent at intersections. Social cost in 2007: \$36.3M.
2. Transit NZ roads: worst month July, worst day Friday, 30 percent on wet roads, 29 percent at night, 56 at intersections. Social cost in 2007: \$19.4M.

Southland District Council:

1. Local roads, worst month February, worst day Sunday, 29 percent on wet roads, 40 percent at night, 18 percent at intersections. Social cost in 2007: \$27.0M.
2. Transit NZ roads, worst month July, worst day Friday, 40 percent on wet roads, 34 percent at night, 14 percent at intersections. Social cost in 2007: \$33.5M.

Gore District Council:

1. Local roads, worst month July, worst day Saturday, 29 percent wet on wet roads, 4 percent at night, 27 percent at intersections. Social cost in 2007: \$3.7M.
2. Transit NZ roads, worst month July, worst day Friday, 36 percent on wet roads, 35 percent at night, 25 percent at intersections. Social cost in 2007: \$9.3M.

Indicator 2: Recorded and Resolved Crime Southland Police Area 2005 – 2008

Relevance: The level of recorded and crime provides a broad measure of personal and community safety within the Southland Region. It should be noted that caution is required with the interpretation of crime data, as fluctuations in rates may be affected by changes in the reporting and recording of criminal activity as well as alterations in the actual recorded levels of activity.

Recorded and Resolved Crime Southland Area 2005-2008								
Year	2005		2006		2007		2008	
Measures	Recorded	Resolved	Recorded	Resolved	Recorded	Resolved	Recorded	Resolved
Offences:								
Violence ⁸	969	802	1,063	883	1,258	1,032	1,378	1,177
Sexual ⁹	85	43	89	53	82	53	92	60
Drugs and Antisocial ¹⁰	1,560	1,438	1,402	1,319	1,701	1,591	1,916	1,792
Dishonesty ¹¹	4,522	1,372	4,380	1,405	4,005	1,083	4,221	1,264
Property Damage ¹²	1,987	456	1,960	496	1,910	455	2079	488
Property Abuse ¹³	598	451	481	349	459	329	481	358
Administrative ¹⁴	368	331	319	273	399	350	217	180
Totals	10,089	4,893	9,694	4,778	9,814	4,893	10,384	5,319
New Zealand	407,496	176,362	424,134	185,224	426,380	194,763	431,381	201,417

Source: <http://www.stats.govt.nz/products-and-services/table-builder/crime-tables/offences/offence-calendar.htm#southern>

⁸ **Offence Class Description:** Homicide, Kidnapping And Abduction, Robbery, Grievous Assaults, Serious Assaults, Intimidation And Threats, Group Assemblies

⁹ **Offence Class Description:** Sexual Affronts, Sexual Attacks, Abnormal Sex, Immoral Behaviour, Immoral Behaviour/Miscellaneous

¹⁰ **Offence Class Description:** Drugs (not Cannabis), Drugs (Cannabis Only), Drugs (new Drugs), Gaming, Disorder, Vagrancy Offences, Family Offences, Family Offences Continued, Sale Of Liquor Act.

¹¹ **Offence Class Description:** Burglary, Car Conversion Etc, Theft, Receiving, Fraud, Dishonesty Miscellaneous.

¹² **Offence Class Description:** Destruction Of Property, Endangering.

¹³ **Offence Class Description:** Trespass, Littering, Animals, Postal/rail/fire Service Abuses, Arms Act Offences.

¹⁴ **Offence Class Description:** Against Justice, Births, Deaths And Marriages, Immigration, Racial, Against National Interest, By Law Breaches, Justice (special).

Current level and trends: The Crime statistics for the calendar year ended 31 December 2008 showed an increase on the 2006 year, with total offences up by 570 offences from 9814 to 10,384.

The 1.2 percent increase in total offences observed for the calendar year ended 31 December 2007 was attributed to Southland Police having targeted particular categories of offending. Family violence was a focus of attention by Police and partner agencies, with Police having acted to deter recidivist offenders by charging them with appropriate offences which reflected the level of violence used in the relationship. While this policy skewed the statistics in violent offending for the year ended 31 December 2007 (an increase of 195 offences: 1063-1258) it also resulted in an overall 8 percent decrease in recorded recidivist family violence incidents. Continued attention by Police to improve behaviour standards in the Invercargill Central Business District led to an increase in drugs and anti-social offending (increased by 299 offences: 1402-1701). Southland Police are also targeted offenders who breached Court Orders, leading to an increase in administrative offences (increased by 80 offences: 319-399). The overall resolution rate of 49.9 percent for the year ended 31 December 2007 was indicative of the strong support which Police received from partner agencies and the Southland community. In the rural stations reductions in crime were recorded in: Lumsden (155-128); Riverton (189-172); Te Anau (293-223) and Winton (311-240).

Indicator 3: Percentage of residents who feel safe in their homes, neighbourhoods and communities

Relevance: A Southland survey of residents will be conducted in 2010 to determine the percentage of residents who feel safe in their homes, neighbourhoods and communities constitutes an alternative measure of public safety, and provides a more subjective perception of issues of personal and community safety in the Southland Region.

Survey to be undertaken 2009/10

Current level and trends: More data is required to establish local/regional trends.

Outcome Four

“We are healthy people”

Intermediate Outcomes

- 4.1 We are able to live healthy lifestyles
- 4.2 We have good quality affordable housing
- 4.3 We live in a compassionate caring community
- 4.4 We have equity of access to health services.



Indicators: Six indicators have been utilised in this section to provide a regional picture of the health of the Southland community.

Data Sources: Sport and Recreation New Zealand, Sport, Recreation and Physical Activity Profile: Southland Region 2007/08; A Portrait of Health. Key Results of the 2006/07 New Zealand Health Survey, Ministry of Health, 2008; AMP Home Affordability Reports June 2005 – March 2006; Massey University Home Affordability Reports June 2006 – May 2008; Ministry of Social Development, Social Report 2007. Southland Region; Social Report 2008; Statistics New Zealand, New Zealand Life Tables 2000-2002, and 2005-2007.

Southland and Otago District Health Board Boundaries



Source: New Zealand Ministry of Health

Indicator 1: Life Expectancy at birth

Relevance: Live expectancy at birth indicates the total number of years a person could expect to live, based on the mortality rates of the population at each age in a given year or period.

Life expectancy at birth (years):	1995-1997		2000-2002		2003-2004		2005-2007	
	Male	Female	Male	Female	Male	Female	Male	Female
Southland Region	73.3	79.0	74.5	80.1	-	-	75.9	81.9
National	74.4	79.7	76.5	81.4	77.0	81.3	77.9	81.9
OECD Median	-	-	75.2	80.8	76.1	81.4	77.1	82.3

Source: Ministry of Social Development, Social Report 2007 and Southland Region Social Report 2008; Statistics New Zealand, New Zealand Life Tables 2000-2002 and 2005 - 2007.

Current Level and Trends: More data required to establish regional/national trends for the August 2005-August 2008 reporting period.

Indicator 2: Southland Regional Sport, Recreation and Physical Activity Profile 2007-2008

The Active New Zealand survey, undertaken by Sport and Recreation New Zealand, monitors sport, recreation and physical activity levels at a regional level, based on the geographical areas serviced by New Zealand's 17 regional sports trusts. A total of 4,443 adults aged 16 years and over were interviewed face-to-face, of which 217 interviews were completed within the Southland region. The interviews were completed over a 12-month period beginning in March 2007. An overall response rate of 61 percent was achieved for the total New Zealand sample, with a response rate of 55 percent for the Southland region.

Relevance: Rates of physical activity reflect the overall health of the community, as inactivity will exacerbate certain medical conditions.

a. Percentages of adults in the Southland Region who met the New Zealand Physical Activity Guidelines of participation in at least 30 minutes of moderately intense physical activity (activity which causes a slight but noticeable increase in breathing and heart rate) on most, if not on all, days of the week.

	Southland (% of regional adult population)	Males	Females	New Zealand (% of national adult population)
At least 30 minutes a day over: 5-7 days (3-4 days) (0-2 days)	52.6% (13.4%) (34.0%)	57.8%	48.7%	48.2% (19.4%) (32.4%)
Some activity - total of at least 30 minutes over 7 days	33.1%	32.8%	33.3%	39.1%
Inactive – total of less than 30 minutes over 7 days	14.3%	9.4%	18.0%	12.7%

Source: Sport and Recreation New Zealand, Sport, Recreation and Physical Activity Profile: Southland Region 2007/08.

b. Ten most popular sport and recreation activities participated in over 12 months

	Total Adults Participating	Percentage of Regional Population	Participation by adult male population (%)	Participation by adult female population (%)
Walking	51,080	57.0%	39.0%	71.2%
Gardening	48,369	54.3%	44.0%	62.1%
Cycling ¹⁵	32,395	36.4%	35.3%	37.2%
Swimming	25,399	28.5%	32.1%	25.8%
Equipment-based exercise ¹⁶	25,330	28.4%	23.6%	32.1%
Fishing ¹⁷	23,465	26.3%	43.5%	-
Jogging/Running	18,284	20.5%	24.5%	17.5%
Snowsports ¹⁸	16,652	18.7%	24.2%	-
Dance ¹⁹	16,533	18.6%	-	26.5%
Golf	14,023	15.7%	25.5%	-
Hunting ²⁰	-	-	19.5%	-
Tramping	-	-	-	16.5%
Netball ²¹	-	-	-	15.7%
Pilates/Yoga	-	-	-	15.3%

Source: Sport and Recreation New Zealand, Sport, Recreation and Physical Activity Profile: Southland Region 2007/08.

Current level and trends: Per week, 79.5 percent of adults (80.1 percent of men and 79.0 percent of women) in the Southland Region participated in at least one sport or recreation activity, increasing per month to 89.7 percent (91.3 percent male, 88.5 percent female) and per annum to 96.8 percent (96.5 percent male and 97.0 percent female). Over a 12 month period, 89.8 percent of adults (89.4 male and 90.1 female) took part in at least two different types of sport or recreation activity, while 78.3 percent (81.6 percent male and 75.9 percent female) took part in three or more sport or recreation activities.

By comparison with all New Zealand adults, adults in the Southland region were significantly more likely to have participated in an organized competition or event (50.7 percent of the regional adult population, 61.4 percent male and 42.7 percent female), were significantly more likely to have received instruction to improve their performance for a sport or recreation activity (49.1 percent of the regional adult population, 46.2 percent male and 51.3 percent female), and were significantly more likely to have volunteered for a sport or recreational activity (37.4 percent of the regional adult population, 39.8 percent male, 35.5 percent female).

¹⁵ Cycling includes mountain biking.

¹⁶ Equipment-based exercise includes the use of exercise equipment (e.g. exercycles, treadmills, weights) at home or at the gym.

¹⁷ Fishing includes freshwater and marine fishing.

¹⁸ Snowsports includes skiing and snow boarding.

¹⁹ Dance includes several dance genres, including ballet, hip-hop, disco, ballroom, modern and tap.

²⁰ Hunting includes general hunting, deerstalking and pig hunting.

²¹ Includes both indoor and outdoor netball.

Indicator 3: Housing – quality/age/affordability of housing stock

a. Southland housing stock 2008

New Zealand Housing Stock Distribution (Source: QV Ltd, 2008)					
Region	Pre-1980 Housing Stock	Total Housing Stock	% of total Housing Stock constructed pre-1980	No. of Retrofitted Houses	Retrofitted houses as % of pre-1980 Housing Stock
Northland	31,098	62,576	59%	1,202	3.8%
Bay of Plenty	51,118	96,523	53%	3,371	6.6%
Gisborne	12,378	14,169	87%	956	7.7%
Hawke's Bay	36,359	49,405	74%	2,587	7.1%
Taranaki	26,903	36,312	74%	1,431	5.3%
Manawatu-Wanganui	57,525	78,716	73%	1,203	2.1%
Tasman	8,688	16,078	54%	74	0.85%
Nelson	10,425	17,204	61%	1,166	11.1%
Marlborough	9,621	17,605	55%	442	4.5%
West Coast	9,702	12,470	78%	571	5.8%
Otago	49,576	68,989	72%	1,819	3.6%
Southland	28,874	33,668	86%	1,141	3.9%

Source: R. Tromop, EECA, 'Hey Southland what are you doing with that energy', Energy Challenges Conference, 6 June 2008.

b. Southland home affordability 2005 - 2008

Relevance: The affordability index permits comparisons over time and between regions of the relative affordability of housing. The lower the index, the more affordable the housing.

The index is compiled in the Department of Economics and Finance at Massey University from average weekly earnings and mortgage interest rate figures from Statistics New Zealand and Reserve Bank data, while housing price data is sourced from the Real Estate Institute of New Zealand.

	Southland (lower index equals more affordable housing)	New Zealand (lower index equals more affordable housing)	Regional Affordability as a percentage of National Average	Southland Percentage change over previous 12 month period (Decline = less Affordable)	New Zealand Percentage change over previous 12 month period (Decline = less Affordable)
May 2008	21.88	32.92	66.5%	32.9% decline	1.5% decline
Feb 2008	20.98	33.12	64.3%	21.3% decline	6.2% decline
Nov 2007	22.19	33.86	65.6%	39.7% decline	9.6% decline
August 2007	18.16	33.25	54.6%	19.6% decline	13.2% decline
May 2007	16.46	32.44	50.7%	26.8% decline	11.9% decline
Feb 2007	17.30	31.20	55.4%	31.1% decline	9.8% decline
Nov 2006	15.89	30.90	51.4%	18.1% decline	7.3% decline
Aug 2006	15.19	29.38	51.7%	8.0% decline	6.9% decline
May 2006	12.98	28.98	44.8%	0.5% decline	11.2% decline
Feb 2006	13.19	28.42	46.4%	3.9% decline	11.1% decline
Nov 2005	13.46	28.80	46.7%	3.9% decline	16.3% decline
Aug 2005	14.06	27.49	51.2%	28.7% decline	19.2% decline
May 2005	15.28	26.05	58.7%	27.8% decline	14.9% decline

Source: AMP Home Affordability Reports June 2005 – March 2006; Massey University Home Affordability Reports June 2006 – May 2008.

Current level and trends: Since May 2005, housing in Southland has become steadily less affordable, against the national trend from mid-2007 whereby house price increases have slowed. Despite the recent significant increases in house prices in Southland, the region still offers the most affordable housing with an index of 66.5%, with Otago in second place at 72.2% and Manawatu/Wanganui in third place with 77.7%. Central Otago Lakes is the least affordable region with an index of 149.8%, followed by Auckland with 123.5%.

Indicator 4: Access to Primary Health Providers²²

a. Children and adults who saw a general practitioner in the previous 12 months, by District Health Board area (2006/07 health survey)

Relevance: The local doctor or general practitioner (GP) is the first point of contact which the majority of New Zealanders have with the health care system. While GPs operate private businesses and set their own fees for consultations and other services, the national Primary Health Care Strategy has provided new government funding in order to lower the costs of GP visits and to encourage free GP consultations for children under six years of age.

DHB area	GP Consultations - children	Number of children	GP Consultations - adults	Number of adults
Northland/Tairāwhiti/Hawke's Bay/Lakes/Whanganui	81.7%	94400	82.6%	310200
Waitemata	80.0%	83200	81.4%	308400
Auckland	83.8%	62600	79.3%	256000
Counties Manukau	80.1%	89100	83.3%	268500
Waikato	75.3%	57400	80.8%	209500
Bay of Plenty/Taranaki/Mid Central	78.3%	77100	79.8%	280400
Wairarapa/Hutt Valley/Capital and Coast	80.9%	72300	82.2%	284800
Canterbury	79.0%	71800	83.0%	308200
Nelson Marlborough/West Coast/South Canterbury/Otago/Southland	73.3%	68900	79.3%	311400
New Zealand total	79.2%	676800	81.3%	2537400

Source: A Portrait of Health. Key Results of the 2006/07 New Zealand Health Survey, Ministry of Health, 2008.

Current Level and Trends: The proportion of children and adults in South Island District Health Board areas (excluding Canterbury) who saw a GP in the previous twelve months was significantly lower than the national average, and Auckland in particular. The national average cost for adults of visiting a GP was \$21 to \$30, with women being slightly more likely than men to be charged this amount.

b. Unmet need for GP services by District Health Board area

Relevance: The unmet need for primary health care services illustrates the proportions of children and adults who are unable to see a GP when they need to, by reason of the unavailability of GPs, the cost of a consultation, an unwillingness to see a GP, or an inability to spare the time or obtain transport.

²² Data is based on direct survey estimates, and could be confounded by different population characteristics within each District Health Board. Due to the small sample size, some District Health Board areas have been combined. Survey population is the estimated resident population living in permanent private dwellings as at 13 June 2007.

DHB area	Unmet GP services - children	Number of children	Unmet GP services - adults	Number of adults
Northland/Tairāwhiti/Hawke's Bay/Lakes/Whanganui	4.5%	5100	7.5%	28200
Waitemata	4.4%	4600	7.5%	28400
Auckland	3.9%	2900	7.0%	22500
Counties Manukau	2.3%	2600	4.5%	14500
Waikato	5.9%	4500	9.5%	24700
Bay of Plenty/Taranaki/Mid Central	3.9%	3800	6.0%	21100
Wairarapa/Hutt Valley/Capital and Coast	5.0%	4500	8.8%	30400
Canterbury	4.9%	4500	3.5%	12900
Nelson Marlborough/West Coast/South Canterbury/Otago/Southland	2.2%	2000	3.7%	14700
New Zealand total	4.0%	34500	6.3%	197400

Source: A Portrait of Health. Key Results of the 2006/07 New Zealand Health Survey, Ministry of Health, 2008.

Current Level and Trends: The proportion of children and adults in South Island District Health Board areas (excluding Canterbury) who had an unmet need to visit a GP in the previous twelve months was significantly lower than the national average.

Indicator 5: Publicly-Funded Hospital Discharges by Diagnosis 2004-2006 by Territorial Local Authority

Relevance: Rates of hospitalisation and disease prevalence are standard measures of the physical health of a community.

	2004				2005				2006			
	ICC	SDC	GDC	Total	ICC	SDC	GDC	Total	ICC	SDC	GDC	Total
Diagnosis												
Infectious and Parasitic Diseases	196	99	40	335	278	95	19	392	271	110	24	405
Neoplasms	793	301	205	1,299	789	261	174	1,224	749	231	192	1,172
Endocrine, Nutritional and Metabolic Diseases and Immunity Disorders	176	60	52	288	195	64	48	307	209	80	81	370
Diseases of Blood and Blood-Forming Organs	84	29	45	158	96	33	24	153	85	44	22	151
Mental Disorders	369	99	47	515	300	81	51	432	351	64	48	463
Diseases of the Nervous System and Sense Organs	516	176	110	802	614	176	144	934	684	180	124	988
Diseases of the Circulatory System	1,100	382	251	1,733	1,097	405	212	1,714	1,114	354	256	1,724
Diseases of the Respiratory System	830	235	157	1,222	747	281	125	1,153	846	242	153	1,241
Diseases of the Digestive System	853	374	220	1,447	1,002	376	239	1,617	1,024	384	214	1,622
Diseases of the Genitourinary System	535	222	104	861	612	226	106	944	574	197	66	837
Complications of Pregnancy, Childbirth and the Puerperium	1,015	511	279	1,805	1,002	451	198	1,651	1,030	432	248	1,710
Diseases of the Skin and Subcutaneous Tissue	201	58	41	300	207	77	29	313	222	83	32	337
Diseases of the Musculoskeletal system and Connective Tissue	349	161	82	592	425	162	122	709	439	170	93	702
Congenital Anomalies	131	43	15	189	144	53	25	222	126	35	19	180
Certain Perinatal Conditions Originating in the Perinatal Period	262	112	66	440	253	106	56	415	297	124	69	490
Symptoms, Signs and Ill-Defined Conditions	724	298	177	1,199	810	267	144	1,221	970	340	145	1,455
Injury and Poisoning	958	399	230	1,587	1,116	504	237	1,857	1,098	456	270	1,824
Other	1,143	694	474	2,311	1,103	650	354	2,107	939	398	447	1,784
TOTALS	10,235	4,253	2,595	17,083	10,790	4,268	2,307	17,365	11,028	3,924	2,503	17,455

Sources: Statistics New Zealand Invercargill City, Southland District and Gore District Quarterly Reviews 2007-2008.

Diagnosis Classifications:

Infectious and Parasitic Diseases: Diseases such as tuberculosis, HIV/AIDS, polio, pertussis, measles, mumps, rubella, meningococcal infection and chickenpox.

Neoplasms: Cancers, both malignant and benign.

Endocrine, Nutritional and Metabolic Diseases and Immunity Disorders: Disorders of the thyroid and other endocrine glands, nutritional deficiencies and other metabolic and immunity disorders. Diabetes mellitus is coded into this classification.

Diseases of the Blood and Blood-Forming Organs: Anaemias and other blood conditions and diseases.

Mental Disorders: Organic psychotic conditions, psychosis, neurotic disorders and mental retardation.

Diseases of the Nervous System and Sense Organs: Various diseases affecting the nervous system (e.g. epilepsy, meningitis), and the eyes (glaucoma, cataracts) and ears (glue ear).

Diseases of the Circulatory System: Heart disease, strokes, rheumatic fever and other conditions of the veins and arteries.

Diseases of the Respiratory System: Asthma, tonsillitis, laryngitis, emphysema, pneumonia and influenza and bronchitis.

Diseases of the Digestive System: Ulcers, appendicitis, hernias and other diseases of the oesophagus, stomach and intestines.

Diseases of the Genitourinary System: Includes diseases of the genitals and urinary system.

Complications of Pregnancy, Childbirth and the Puerperium: Conditions associated with pregnancy.

Diseases of the Skin and Subcutaneous Tissue: Various skin conditions including cellulitis and corns.

Diseases of the Musculoskeletal System and Connective Tissue: Arthritis, rheumatism.

Congenital Anomalies: Inherited genetic conditions including spina bifida.

Certain Perinatal Conditions Originating in the Perinatal Period: Conditions affecting babies that originate in the latter stages of the pregnancy or the first month of life.

Symptoms, Signs, and Ill-Defined Conditions: General information where no specifics are able to code better. In death data, most Sudden Infant Death Syndrome (SIDs) deaths are coded into this category.

Injury and Poisoning: All injuries and poisonings, including fractures, open wounds, superficial injuries, contusions, burns. Poisonings.

Other: Factors influencing health status and contact with health services. This includes liveborn infants and people who are admitted for reasons such as exposure to communicable diseases.

Current Level and Trends: The New Zealand Health Information Service provides hospital discharge information relating to patients discharged from day patient and in-patient care in publicly-funded hospitals, and publicly funded-patients in private hospitals. Patient discharge details from psychiatric hospitals and licensed rest homes are excluded. The number of hospital discharges includes patients who were re-admitted for the same condition and patients who were transferred to other hospitals or residential institutions, meaning that there may be more than one discharge per immediate 'episode' of illness. Discharge figures also include any patients who died in hospital after formal admission.

Indicator 6: General Health Summary by District Health Board area 2006/07

Relevance: The following parent-rated or self-rated excellent or very good health for children and adults provide an alternative measure of health, and provide a more subjective, customer focused perception of the quality of life and wellbeing enjoyed by a community.

DHB area	Parental rating of children's health excellent - very good	Number of children	Adult self-rating of health excellent - very good	Number of adults
Northland/Tairāwhiti/Hawke's Bay/Lakes/Whanganui	86.5%	99900	60.3%	226400
Waitemata	85.5%	88900	61.6%	233300
Auckland	86.4%	64500	60.7%	195800
Counties Manukau	85.4%	94900	60.2%	194000
Waikato	85.1%	64900	56.7%	147100
Bay of Plenty/Taranaki/Mid Central	87.2%	85900	60.2%	211400
Wairarapa/Hutt Valley/Capital and Coast	89.0%	79700	60.8%	210800
Canterbury	90.4%	82200	63.2%	234400
Nelson Marlborough/West Coast/South Canterbury/Otago/Southland	89.6%	84300	60.7%	238500
New Zealand total	87.2%	745100	60.6%	1891800

Source: Portrait of Health. Key Results of the 2006/07 New Zealand Health Survey, Ministry of Health, 2008.

Current Level and Trends: Parents tended to rate the health of children much higher than adults rated their own health. Boys aged 5-9 years had the lowest parent-rated health, and adults aged over 75 had the lowest self-rated health. In the 35-54 age bracket, women were significantly more likely than men to rate their health as excellent or very good. Asian boys and Pacific girls were less likely to have excellent or very good parent-rated health, while Maori, Pacific and Asian men and women were all less likely to self-rate their health as excellent or very good. Self-ratings of health by adults was noticeably different between least and most-deprived neighbourhoods.²³

²³ A Portrait of Health. Key Results of the 2006/07 New Zealand Health Survey, Ministry of Health, 2008, pp. 181-187.

Outcome Five

“Strong, effective leadership taking us into the future”

Intermediate Outcomes

- 5.1 Citizens and communities are inspired, motivated and empowered
- 5.2 Decisions are progressive, forward looking and robust.
- 5.3 The community has confidence in its leaders



WasteNet Southland www.wastenet.org.nz

Indicators: Two indicators have been utilised in this section to illustrate the extent to which the community is involved in national and local democratic processes.

Data Sources: Department of Internal Affairs, Local Authority Election Statistics 2004 and 2007; <http://2005.electionresults.govt.nz/e9/html/statistics.html>; http://www.electionresults.govt.nz/electionresults_2008/e9/html/e9_part9_1.html.

Indicator 1: Southlanders' participation in the 2004 and 2007 local authority elections compared with national trends

Relevance: Voting rates in local authority elections are a measure of political participation and of the confidence which voters have in and the importance which they attach to local or regional political institutions. Regional councils are responsible for a range of functions, including resource management and environmental planning. Members of regional councils are elected from constituencies, and appoint their own chairs. City and district councils are territorial authorities responsible for a wide range of functions including roads, water supply, sewage disposal and rubbish collection, as well as community facilities, and undertake certain regulatory functions. Each territorial authority has a directly elected mayor, while councillors are elected by wards. District health boards provide or purchase government-funded health care services to improve, promote and protect the health of the population within the board's geographic area. Members of district health boards are either elected, or appointed by the Minister of Health. While licensing trusts are not local authorities, they are directly elected bodies for the purpose of operating licensed premises. A feature of both the 2004 and 2007 local authority elections was the use of first past the post voting for council elections and single transferable voting for the election of district health board members. Both elections were conducted by post, and voters had three weeks within which to return their votes.

a. Voter turnout for Southland local authority elections 2004 and 2007

Local authority elections 2004

Local Authority	Total Electors	Total Electors (contested wards only)	Total Voters	Overall Turnout	Change in turnout 2001-2004
Southland Regional Council	66,171	56,027	31,046	56%	-3%
Invercargill City Council	37,088	37,088	20,311	55%	-4%
Southland District Council	20,054	6,871	3,966	58%	-3%
Gore District Council ²⁴	9,157	982	650	66%	-6%
Southland District Health Board	75,230		35,896 ²⁵	51%	2%
Invercargill Licensing Trust	30,931	30,931	16,798 ²⁶	54%	-
Mataura Licensing Trust	8,585	8,462	5,467 ²⁷	65%	-
NZ Regional Councils				45%	-4%
NZ City Councils				43%	-2%
NZ District Councils				51%	-6%
NZ District Health Boards				46%	-4%
NZ Licensing Trusts				47%	-

Source: Local Authority Election Statistics 2004, Department of Internal Affairs, 2006.

²⁴ Ten of eleven council positions were elected unopposed in 2004.

²⁵ Total valid voters.

²⁶ Residential voters.

²⁷ Residential voters.

Local authority elections 2007

Local Authority	Total Electors	Total Electors (contested wards only)	Total Voters	Overall Turnout	Change in turnout
2004-2007	66,171	56,027	31,046	56%	-3%
Southland Regional Council	66,181	42,799	21,772	51%	-5%
Invercargill City Council	37,472	37,472	19,388	52%	-3%
Southland District Council	19,822	8,572	4,368	51%	-7%
Gore District Council ²⁸	8,999	8,999	5,959	66%	+ <1%
Southland District Health Board	76,377		39,564 ²⁹	52%	1%
Invercargill Licensing Trust	31,051	31,051	15,920	51%	-3%
Mataura Licensing Trust	12,448	6,584	4,282	62%	-3%
NZ Regional Councils				43%	-2%
NZ City Councils				41%	-2%
NZ District Councils				49%	-2%
NZ District Health Boards				43%	-3%
NZ Licensing Trusts				43%	-4%

Source: Local Authority Election Statistics 2007, Department of Internal Affairs, 2008.

b. Voter turnout for mayoral elections 2004 and 2007

Mayoral Elections 2004

Local Authority	Total Electors	Total Voters	Overall Turnout
Invercargill City Council	37,088	20,310	55%
Southland District Council	19,931	No Mayoral Election	
Gore District Council	9,146	5,904	65%
NZ City Mayoralties			43%
NZ District Mayoralties			52%

Source: Local Authority Election Statistics 2004, Department of Internal Affairs, 2006.

Mayoral Elections 2007

Local Authority	Total Electors	Total Voters	Overall Turnout
Invercargill City Council	37,472	19,388	52%
Southland District Council	19,822	9,468	48%
Gore District Council	8,999	5,707	63%
NZ City Mayoralties			41%
NZ District Mayoralties			49%

Source: Local Authority Election Statistics 2007, Department of Internal Affairs, 2008.

Total electors - the total on the roll of electors for the whole district, and includes contested and uncontested constituencies/wards, ratepayer (if applicable) and residential electors.

Voters – the sum of both eligible residential voters and ratepayer voters (including informal, blank and valid special votes).

²⁸ Only one of eleven council positions was elected unopposed in 2007.

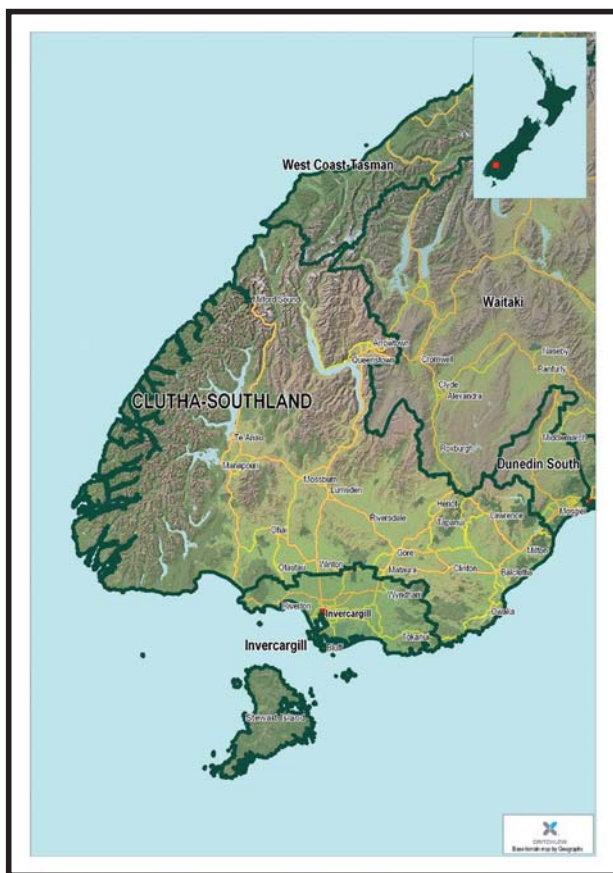
²⁹ Total valid votes.

Turnout – the percentage of electors on the roll (for those areas where an election was required) who voted.
 Overall Turnout – the total number of residential and ratepayer voters (including blank, informal and special votes) divided by the total number of electors on both the residential and ratepayer rolls in contested areas.
 Residential elector – anyone registered as a parliamentary elector, and whose address is in the area in which an election is held, qualifies to vote in that district health board/community board (if any)/licensing trust (if any)/or regional/city/district council area.
 Ratepayer elector – ratepayers owning property in a region, city, district or community in which they are not resident, but who are registered parliamentary electors, are entitled to enroll for the ratepayer franchise and may vote in all elections except for district health boards.

Current level and trends: Voter participation in the 2004 and 2007 local authority elections within the Southland Region compared favourably with national trends, with the overall turnout in local authority, mayoral, district health board and licensing trust elections all exceeding the national turnout.

Indicator 2: turnout for the Invercargill and Clutha-Southland electorates in the 2005 and 2008 General Elections compared with national trends

Relevance: Voting rates in general elections are a measure of political participation and of the confidence which voters have in and the importance which they attach to central government institutions and political parties. Under the Mixed Member Proportional representational system, each registered voter every general and every Māori electorate may cast two votes – one for an electorate candidate, and one for a political party. The successful electorate candidate is the one who receives the most votes, while political parties are allocated a proportion of seats in parliament relative to their share of the national party votes.



Sources: http://www.parliament.nz/en/NZ/MPP/Electorates/5/1/9/DBHOH_Lib_EP_Clutha-Southland_TOC_1-Clutha-Southland-Electorate-Profile.htm; http://www.parliament.nz/en/NZ/MPP/Electorates/8/b/5/DBHOH_Lib_EP_Invercargill_TOC_1-Invercargill-Electorate-Profile.htm

a. Party Votes and Turnout by Electorate - 2005 and 2008 General Elections

2005 General Election

Electoral District	Electoral Population	Electors on Master Roll	Total Votes Cast	Votes Cast to Electors on Master Roll	Informal Votes Recorded
Clutha-Southland	51,902	37,567	30,580	81.4%	0.49%
Invercargill	51,673	39,414	32,074	81.38%	0.35%
General Electorates – National Totals				82.01%	0.41%

Source: <http://2005.electionresults.govt.nz/e9/html/statistics.html>

2008 General Election

Electoral District	Electoral Population	Electors on Master Roll	Total Votes Cast	Votes Cast to Electors on Master Roll	Informal Votes Recorded
Clutha-Southland	58,166	42,394	34,064	80.35%	0.42%
Invercargill	57,411	44,411	35,348	79.59%	0.41%
General Electorates – National Totals				79.46%	0.51%

Source: http://www.electionresults.govt.nz/electionresults_2008/e9/html/e9_part9_1.html

b. Electorate Candidate Votes and Turnout by Electorate - 2005 and 2008 General Elections

2005 General Election

Electoral District	Electoral Population	Electors on Master Roll	Total Votes Cast	Percentage of Votes Cast to Electors on Master Roll	Percentage of Valid Votes Recorded for Candidate Elected	Percentage of Informal Votes Recorded
Clutha-Southland	51,902	37,567	30,580	81.4%	65.47%	0.70%
Invercargill	51,673	39,414	32,074	81.38%	48.54%	0.99%
General Electorates – National Totals				82.01%		1.10%

Source: <http://2005.electionresults.govt.nz/e9/html/statistics.html>

2008 General Election

Electoral District	Electoral Population	Electors on Master Roll	Total Votes Cast	Percentage of votes cast to Electors on Master Roll	Percentage of valid votes recorded for candidate elected	Percentage of Informal Votes Recorded
Clutha-Southland	58,166	42,394	34,064	80.35%	66.44%	1.05%
Invercargill	57,411	44,411	35,348	79.59%	54.92%	0.97%
General Electorates – National Totals				79.46%		1.09%

Source: http://www.electionresults.govt.nz/electionresults_2008/e9/html/e9_part9_2.html

General electoral population - the total number of people from the census minus the Maori electoral population.
 Master roll - the list of all of the registered electors for a particular electorate kept by the Registrar of Electors.
 Informal vote - a vote at a general election, by-election or referendum which, while not a disallowed vote, does not satisfy the clear intention test.

Current level and trends: While voter participation in the 2005 general election was slightly lower than the national turnout, this trend was reversed in the 2008 general election, with the percentage of votes cast to electors on the master roll slightly exceeding the national percentage.

Outcome Six

"A treasured environment which we care for and which supports us now and into the future"

Intermediate Outcomes

- 6.1 We have an informed community caring for the environment
- 6.2 We have a healthy, safe and accessible built environment
- 6.3 We have an environment protected from the negative effects of human activities



Indicators: Five indicators have been utilised in this section to provide an insight into the current and future environmental wellbeing of the Southland Region.

Data Sources: Environment Southland EnviroSchools Programme; Environment Southland website; Ministry of Social Development Social Report 2007; Department of Conservation website.

Indicator 1: Environmental Education - EnviroSchools

Relevance: Environmental education increases people's knowledge and awareness about the environment and associated challenges, assists in the development of the necessary skills and expertise to address these challenges, and fosters attitudes, motivations, and commitment to make informed decisions and take responsible action. Education also provides opportunities for creating channels of communication between the regional community, resource user groups, iwi groups, the education sector and local government. In addition, it can offer a community the opportunity to harness its enthusiasm to creatively solve its own environmental issues.

EnviroSchools – Participating Schools as at December 2007	Years involved	Funded by	EnviroSchools Awards
Invercargill City Council area			
Aurora College	1	Environment Southland	
St Patricks Primary School	1	Environment Southland/ Invercargill City Council	
St Johns Primary School	3	Environment Southland	Silver
Southland District Council area			
Limehills Primary School	3	Environment Southland	Silver
Lochiel Primary School	2	Environment Southland/ Southland District Council	Bronze
Riverton Primary School	1	Environment Southland/ Southland District Council	
Waianiwa Primary School	1	Environment Southland	Bronze
Gore District Council area			
Pukerau Primary School	2	Environment Southland	Bronze
Otama Primary School	2	Environment Southland	Bronze

Source: *EnviroSchools 2007 Summary Report*.

Current level and trends: EnviroSchools is a whole school approach to environmental education with the aim of creating a sustainable school environment, and is well supported by staff from other agencies such as the Department of Conservation and Waste Net Southland. Students plan, design and create sustainable projects that benefit the school and the wider community. Limehills Primary School and St Johns Girls Primary become the first facilitated EnviroSchools in Southland in 2005, with Otama School joining late that year.

Indicator 2: Air quality. Summary of the National Environmental Standard for Air Quality for ambient fine particles - Particulate Matter 10 Microns (PM₁₀) - measured in Invercargill City and Gore District from 2003 to 2007

Relevance: The air quality within Southland can be affected by odours, dust, smoke, agrichemical spray and other discharges to air from the domestic, transport, commercial, agricultural, horticultural, manufacturing and industrial sectors. Wintertime air pollution in urban areas can have associated health effects or create nuisances such as reduced visibility, and dust or odour nuisance resulting from combustion processes. The global implications of Southland's air quality include the reduction of the ozone layer and the emission of greenhouse gasses which contribute to global warming.

	2003		2004		2005		2006		2007	
	ICC	GDC	ICC	GDC	ICC	GDC	ICC	GDC	ICC	GDC
'Good' 0-33% of guideline	44%	--	45%	--	64%	22%	60%	56%	73%	74%
'Acceptable: 33-66% of guideline	36%	--	33%	--	21%	34%	29%	34%	22%	24%
'Alert':66-100% of guideline	13%	--	18%	--	10%	22%	10%	6%	4%	2%
Guideline	7%	--	5%	--	5%	8%	1%	4%	1%	0%
Percentage of valid data ³⁰	15%	--	28%	--	28%	23%	67%	65%	98%	99%
Annual average (µg m-3) ³¹	--	--	19	--	20	21	15	16	14	13
NES breaches ³²	14	--	10	--	10	12	1	7	2	0
Annual maximum (µg m-3) ³³	90	--	88	--	198	102	56	72	63	49
Number of records ³⁴	55	--	101	--	101	86	244	239	356	360

Source: <http://www.es.govt.nz/Departments/EI/Air Quality/index.aspx>

Current level and trends: In the two winter periods since Environment Southland commenced monitoring of PM10 Invercargill, the maximum guideline level of 50 µg/m3 has been exceeded a number of times. In both Invercargill City and Gore District, the exceedances occur between mid-May and mid-August, the period when home heating is at a maximum. It is also a time of year when the region experiences periods of settled weather, with cool and windless nights; ideal conditions for the build up of PM₁₀ emissions from home fires.

³⁰ This shows how much data has been gathered as a % of total hours of data – the higher the percentage the more data is available from which to make informed decisions.

³¹ This is the value representing the average measured through the year at the site monitored. If this value decreases over time it indicates overall air quality has improved.

³² This is the number of official breaches of the National Environmental Standard for PM₁₀.

³³ This is the highest value which has been measured over a calendar year.

³⁴ This is the number of 24 hour values (days) for which data is available.

Indicator 3: Drinking water quality 2001-2007³⁵

Relevance: The percentage of the estimated resident population who receive their water from community water supplies whose drinking water complies with either the 2000 or 2005 Drinking-water Standards for New Zealand relating to *Escherichia coli* (E. coli) and *Cryptosporidium*. The microbiological health risk for drinking water is assessed using compliance criteria based on the two microbiological reference organisms, E. coli and *Cryptosporidium*. Compliance is based on the Drinking-water Standards for New Zealand, and is measured by Environmental Science and Research at the treatment plant for *Cryptosporidium* and in the reticulation area for E. coli.

Year	Invercargill City Council		Southland District Council		Gore District Council	
	E. Coli (%)	Cryptosporidium (%)	E. Coli (%)	Cryptosporidium (%)	E. Coli (%)	Cryptosporidium (%)
2001	0.0	0.0	1.0	0.0	32.7	65.6
2002	0.0	100.3	3.2	13.5	86.0	16.3
2003	99.2	2.5	6.3	13.8	86.0	15.8
2004	96.7	2.3	5.7	11.0	82.3	15.9
2005	99.8	1.7	13.5	10.5	82.9	16.0
2006/2007	99.5	99.5	35.3	7.8	1.7	16.1

Source: Ministry of Social Development Social Report 2007.

Current level and trends: in 2005, the E. coli compliance per percentage of population for the Southland region was 71 percent, and in 2006/07 it was 66.5 percent. The *Cryptosporidium* compliance per percentage of population in Southland was 6.4 percent in 2005 and 59.8 percent in 2006/07.

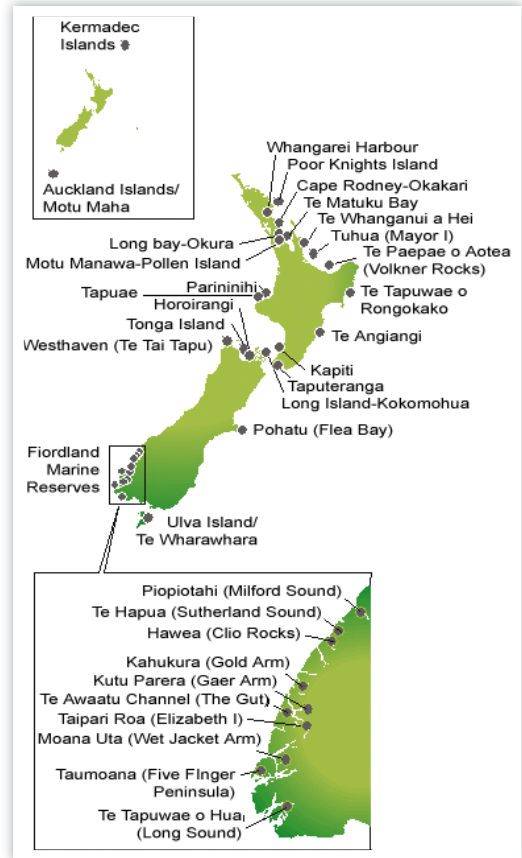
³⁵ The data is derived from a survey which lists all water supplies and the number of people they service. Some people have access to more than one water supply (e.g. a second home in another town) and therefore may be counted twice. This can result in a rate greater than 100 percent.

Indicator 4: Southland's Marine Reserves

Relevance: Like national parks on land, which provide a safe haven for native flora and fauna, marine reserves provide a secure environment where marine creatures can live and breed with little human disturbance.

Current levels and trends: Fiordland's ten marine reserves are found from Milford Sound in the north to Preservation Inlet in the south. They range in size from 93 to 3,672 hectares, and in total include over 10,000 hectares of inner fiord marine habitat. The reserves border the Fiordland National Park and are a prime example of natural environments protected from the peaks of mountains to great depths of the fiords. The marine reserves include a huge variety of habitats and species like sponges, lampshells, and a wide range of fish. They also contain some of the world's biggest populations of black coral trees that can be over 300 years old and are home to brittlestars that can only live entwined in the branches of these underwater trees. Two of the ten reserves, Te Awaatu Channel (The Gut, Doubtful Sound) marine reserve and Piopiotahi (Milford Sound) marine reserve, were initially proposed by the New Zealand Federation of Commercial Fishermen and formally established in 1993. The other eight reserves were established in 2005 as part of the management measures proposed by the Guardians of Fiordland.

The 1075 hectare marine reserve adjoining Ulva Island Open Sanctuary was established in 2004. This reserve protects all marine life within its boundaries, providing a safe haven and nursery for a wealth of underwater life, extending the protection of Stewart Island's/Rakiura's largely pristine environment from land to sea. Nothing found within the reserve can be removed or harmed.



Source: <http://www.doc.govt.nz/templates/summary.aspx?id=33776>

Indicator 5: Recycling Depots and Transfer Stations – Southland

Relevance: The recycling of waste within assists with the minimisation of the impact of human activities on the environment of the Southland Region. Recycling particularly extends the life of landfills and leaves more resources for future generations.

The following items can be collected for recycling in Southland:

- Plastic Bottles (clean & flattened) - only with the symbols 1 or 2 stamped on the base, including kitchen, laundry and bathroom bottles.
- Glass Bottles & Jars (clean & unbroken).
- Tin & Aluminum Cans (clean & flattened). Empty aerosol cans are also collected.
- Paper & Cardboard
- Greenwaste



Source: <http://www.es.govt.nz/Documents/Waste%20Management/Waste%20Minimisation/brochures/RecyclingGuide%203%20fold.pdf>

Recycling depots and transfer stations in Southland

Southland District Council	Gore District Council	Invercargill City Council
Te Anau transfer station	Gore refuse site (limited recycling)	Invercargill transfer station
Manapouri drop off centre	Matakura refuse site (limited recycling)	
Winton transfer station		
Riverton transfer station		
Otautau transfer station		
Wyndham transfer station		
Lumsden transfer station		
Mossburn refuse site		

Primary Composition of the Overall Waste to Southland Regional Landfill (November 2007)		
Primary Category	Tonnes Per Week	% of Total
Organic Material	466	42.1%
Timber	123	11.1%
Paper	122	11.0%
Plastics	113	10.2%
Rubble	65	5.9%
Ferrous Metal	55	5.0%
Glass	48	4.3%
Textiles	48	4.3%
Nappies and Sanitary	42	3.8%
Potentially Hazardous	12	1.1%
Non-Ferrous Metal	8	0.7%
Rubber	6	0.5%
Totals	1,107	100%

Source: <http://www.wastenet.org.nz/icc/index.cfm?19E75DF3-ADC3-9D61-0839-9D35FE0491E7>

Current level and trends: The annual amount of waste generated in the Southland Region is approximately equal to a rugby field, filled six storeys high with rubbish. In 2006, Southland disposed of 55,000 tonnes of waste to the regional landfill 2006, representing over 581 kilograms per person in the region. In November 2007, a study was done at the regional landfill to answer the question - What is in our waste? The results are as follows:

- Almost half (42%) of the waste to landfill in the region is compostable i.e. food scraps, organic material, garden waste, kitchen waste.
- Timber is the second largest material in the landfill at 11.1 percent.
- Combined Paper and Plastic make up 21 percent of the materials found in the site (Note: paper and plastic are both recyclable).

Outcome Seven

"A well-educated and skilled community continually seeking further opportunities to learn"

Intermediate Outcomes

- 7.1 We have accessible learning opportunities
- 7.2 We have high quality leaning opportunities available to meet community needs and demands
- 7.3 We deliver innovative, integrated and effective learning programmes
- 7.4 We have a culture of continuous learning



Indicators: Four indicators have been utilised in this section, in order to present a picture of the skill base available within the Southland Region, and to demonstrate the acquisition of both core and advanced knowledge and skills within the community at all levels of learning.

Data Sources: Ministry of Education, Education Statistics of New Zealand for 2006; http://www.dol.govt.nz/publications/lmr/regional/indepth/southland/aidr-southland-08_05.asp; <http://www.stats.govt.nz/census/census-outputs/quickstats/snapshotplace2.htm?id=1000015&tab=Education&type=region&ParentID=>

Indicator 1: Education participation rates in the Southland Region 2006

a. Number of enrolments in early childhood education services by type of service as at 1 July 2006

Relevance: Early education programmes assist in the social, physical and academic development of young children, and can assist in narrowing the achievement gap between children from low-income families and those from high-income families.

	Number of Enrolments by Type of Service								Total Enrolments
	Number of Services	Licensed Services					Licence-Exempt Groups		
		Kindergarten	Playcentre	Education and Care Service	Home-based Network	Te Kohanga Reo	Te Kohanga Reo	Playgroups	
Southland	113	1,348 (30.9%)	464 (10.6%)	1,414 (32.5%)	196 (4.5%)	108 (2.5%)	19 (0.4%)	807 (18.5%)	4,356
National Percentages	-	24.1%	8.1%	46.7%	5.3%	5.1%	0.05%	9.5%	

Source: Ministry of Education, Education Statistics of New Zealand for 2006.

Current level and trends: Despite the significant number of early childhood services available within the Southland Region, the introduction by the government in July 2007 of the 20 free hours of early education per week has meant a shortage in the Southland early childhood education sector.³⁶

b. Number of students enrolled in Southland by Governing Authority and School Type as at 1 July 2006.

Relevance: The provision of core primary and secondary education facilities within the Southland is vital to the acquisition of knowledge and skills by the young Southland community.

	State				State Integrated			Private		
	Primary	Composite	Secondary	Special	Primary	Composite	Secondary	Primary	Composite	Secondary
Southland	7,586	328	6,703	71	1,163	-	1,006	-	-	-
National Percentages	52.2%	2.9%	29.6%	0.4%	5.1%	1.1%	4.7%	0.7%	2.1%	1.1%

Source: Ministry of Education, Education Statistics of New Zealand for 2006.

Current level and trends: Twelve regions in New Zealand experienced a decrease in enrolments between July 2006 and July 2007. Nelson and Southland had the largest decreases at -2.5 percent and -1.7 percent respectively. Southland was the only region to have had decreases each year for the last ten years.

³⁶ Southland Times, 20 March 2008.

Indicator 2: Students leaving Southland secondary schools by level of highest attainment

Relevance: The NCEA Level 1 qualification requires students to obtain a minimum number of credits in the areas which test literacy and numeracy skills. Those who leave school early with no qualifications are at much greater risk of being unemployable, or employable only in low income work.

a. Students leaving Southland secondary schools during 2005 by level of highest attainment

Highest Attainment Level: 2005								
	NCEA Level 3 or higher	Halfway to a Level 3 qualification	NCEA Level 2	Halfway to a Level 2 qualification	NCEA Level 1	Halfway to a Level 1 qualification	Less than halfway to a Level 1 qualification	Little or no formal attainment
Southland (percentage of leavers in region)	355 (28.2%)	102 (8.1%)	261 (20.7%)	94 (7.5%)	132 (10.5%)	108 (8.6%)	77 (6.1%)	131 (10.4%)
National Percentages	29.6%	12.0%	15.5%	8.5%	7.1%	8.7%	5.8%	12.9%

Source: Ministry of Education, Education Statistics of New Zealand for 2006.

b. Students leaving Southland secondary schools during 2006 by level of highest attainment

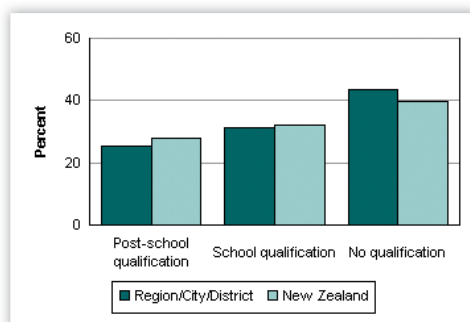
	NCEA Level 3 and above	NCEA Level 2 to less than Level 3	Below NCEA Level 2 Qualification	Little or no formal attainment
New Zealand	32.6%	27.6%	28.7%	11.1%
Southland Region	29.9%	28.9%	33.0%	8.2%
Southland District	26.8%	26.8%	35.8%	10.6%
Gore District	42.5%	30.1%	20.7%	6.7%
Invercargill City	28.0%	29.4%	34.9%	7.7%

Source: http://www.dol.govt.nz/publications/lmr/regional/indepth/southland/aidr-southland-08_05.asp

Current level and trends: The national proportion of students leaving secondary school with no formal qualification dropped from 15% in 2003 to 12.9 % in 2005 and 11.1% in 2006. In Southland, this proportion increased slightly from 10% in 2004 to 10.4% in 2005 and dropped to 8.2% in 2006, with the regional figure remaining at all times below the national percentage. The percentages of school leavers within Southland who had no formal qualification in 2006 were also below the national percentage.

Indicator 3: Highest qualification for people aged 15 years and over, Southland Region and New Zealand, 2006

Relevance: The educational attainment of the adult population is an indicator of the skills and knowledge available to the Southland Region.



Source: <http://www.stats.govt.nz/census/census-outputs/quickstats/snapshotplace2.htm?id=1000015&tab=Education&type=region>

Current level and trends: 32.2 percent of people aged 15 years and over in the Southland Region have a post-school qualification, compared with 39.9 percent of people throughout New Zealand, while 35.6 percent of people aged 15 years and over in the Southland Region have no formal qualifications, compared with 25.0 percent for New Zealand.

Indicator 4: Number of people participating in continuing education

Relevance: The acquisition of advanced qualifications provides for a more capable workforce and contributes to a more vibrant community.

Data to be sourced 2009/10

Current level and trends: The Southland community recognises the need for a highly qualified and skilled workforce for New Zealand's economic and social development. A significant feature of tertiary education in the Southland Region is the Southern Institute of Technology (SIT), which operates campuses in Invercargill and Gore, as well as elsewhere outside the region. The provision of the Zero Fees Scheme tertiary programmes by SIT has enhanced educational opportunities for all students including non-traditional users of tertiary education. The Zero Fees Scheme allows New Zealand citizens, Australian citizens while residing in New Zealand, or permanent residents the opportunity to study approved programmes without paying the tuition fees.

Photographs supplied by: Environment Southland, Invercargill City Council, Southland District Council, Gore District Council, WasteNet Southland, Steve Edwards.

Our way SOUTH LAND

"The Community's Blueprint For The Future"

Website: www.ourwaysouthland.org.nz



www.es.govt.nz



www.icc.govt.nz



www.southlanddc.govt.nz



www.goredc.govt.nz

